



# TX16S

## User Manual

Version: 1.2

[WWW.RADIOMASTERRC.COM](http://WWW.RADIOMASTERRC.COM)

## Table of Contents

1. Overview.....	4
1.1. Introduction.....	4
1.2. Safety instructions.....	4
1.3. Manual and Firmware Download.....	5
1.4. Important note on firmware.....	5
1.5. Remote Control Overview.....	5
1.6. Important note on Power and charging precautions.....	6
1.7. Note about this guide.....	6
1.8. Specifications.....	7
1.9. Warranty and Repair.....	7
1.10. Firmware Update and OpenTX Information.....	8
1.11. Disclaimer.....	8
1.12. Legal status and copyright.....	8
2. OpenTX Companion software (OpenTX companion).....	9
2.1. Software Download and Installation.....	9
2.2. Use Companion software to upgrade remote controller firmware.....	12
3. First boot.....	16
3.1. Calibrate the battery voltage.....	18
3.2. Calibrating Gimbals.....	20
3.3. Set the default Gimbal mode and the default channel output order.....	23
4. Remote control menu details.....	24
4.1. Main interface.....	24
4.2. System settings.....	24
4.2.1 TOOLS (Tool page) description.....	25
4.2.2 SD CARD (SD Card Page) Instructions.....	25
4.2.3 RADIO SETUP Instructions.....	26
4.2.4 GLOBAL FUNCTIONS (Global Functions Page) Instructions.....	27
4.2.5 TRAINER (coach function page) description.....	27
4.2.6 HARDWARE (Hardware setting page) Description.....	28
4.2.7 VERSION (Version page) description.....	29
4.3. Model selection.....	29

---

4.3.1. Create model and model selection.....	29
4.3.2. Channel monitor.....	31
4.3.3. Reset function.....	32
4.4. Model settings (Model Setup) .....	33
4.4.1 Model settings (Model setup) .....	33
4.4.2. Flight Mode (Flight Modes) .....	36
4.4.3. Input Source (Inputs) .....	37
4.4.4. Mix control (Mixer).....	40
4.4.5. Output (Outputs) .....	45
4.4.6 Curves.....	45
4.4.7. Global variables (Global Variables) .....	47
4.4.8. Logic switches.....	49
4.4.9. Special Functions.....	52
4.4.10. Custom Scripts.....	55
4.4.11. Digital Transmission and Telemetry.....	56
5. External UART.....	58

# 1. Overview

## 1.1. Introduction

Thank you for purchasing the RadioMaster TX16S 2.4g remote control system. The system is versatile and can be used by beginners and professionals. In order to ensure the correct and safe use of this product, please read this instruction manual carefully before use. The information contained in this manual is subject to change without notice.

TX16S remote control is suitable for all types of fixed-wing, glider, helicopter and multi-rotor aircraft. The model type can be selected according to the aircraft used, and various setups and mixes can be programmed and used to suit a wide variety of applications.

## 1.2. Safety instructions

Many remote-control models are equipped with powerful motors and sharp propellers. Use caution when working on or operating models. When performing assembly or maintenance, make sure that the model is powered off and the propellers are removed.

**Do not operate the TX16S remote control system under the following conditions:**

- Under severe weather or strong wind conditions, such as rain, hail, snow, storm or harsh electromagnetic environmental conditions.
- Under any circumstances where visibility is limited.
- In areas where people, property, high-voltage power lines, public roads, vehicles or animals may be present.
- If you feel tired or unwell, or under the influence of drugs or alcohol.
- If the remote control or model appears to be damaged or not working properly.
- In areas where 2.4GHz interference is high or where 2.4GHz radios are prohibited.
- When the battery voltage is too low to use.
- In areas where local regulations prohibit the use of aviation models.

## 1.3. Manual and Firmware Download

The TX16S comes pre-installed with standard OpenTX firmware.

To download the latest software manual, visit the RadioMaster website:

<https://www.radiomasterrc.com>

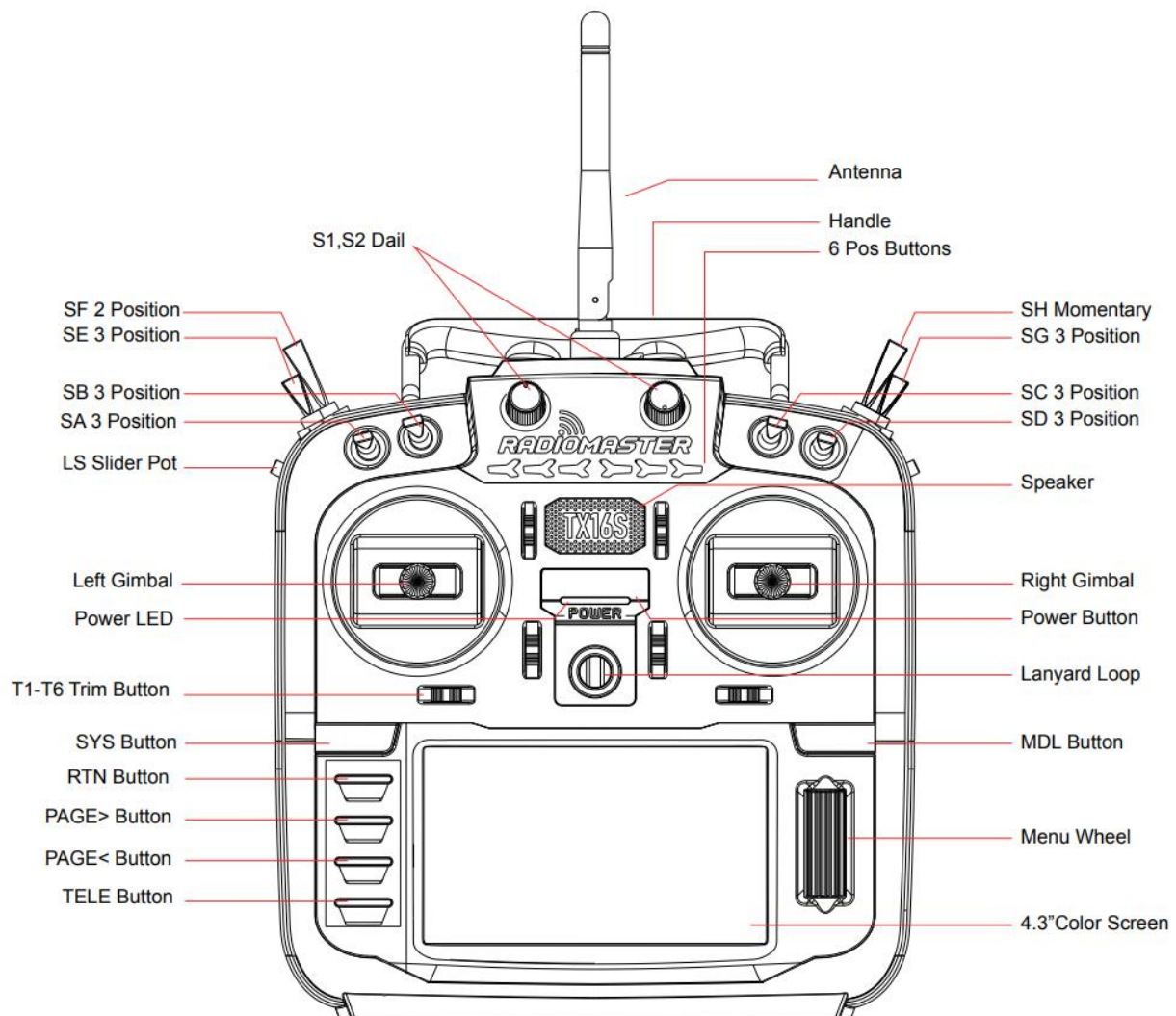
To download the latest firmware for your TX16S remote control, visit the

OpenTX website: <https://www.open-tx.org>

## 1.4. Important note on firmware.

The TX16S comes pre-installed with the most stable firmware at time of manufacture. Please only update firmware if you are experienced and confident in updating your system firmware, update only the firmware intended for your radio. Incorrect updates may render the remote control inoperable.

## 1.5. Remote Control Overview



## 1.6. Important note on Power and charging precautions.



The TX16S has built-in USB charging function for 2cell 7.4v Battery packs (2 x 3.70v Lithium cell packs). The charging circuit is only suitable for 2x 3.70v lithium-ion 18650, 2 x 21700 3.70v lithium-ion (21700 2s 7.40v Lithium-Ion pack), 2x 3.70v Lipoly batteries (2s 7.40v Lipo battery pack) or 2 x 3.60v lithium-ion provided the 3.60v Li-ion cells are able to be charged to 4.20v per cell – CHECK YOUR BATTERY MANUFACTURERS DATA SHEET. DO NOT USE Li-ion cells rated at 3.60v nominal and 4.10v max.

**DO NOT USE cells that cannot be charged to a max of 4.20v per cell.**



Approved for use

2 x 3.7v Li-ION 18650 cells (7.4v using supplied tray)

2 x 3.7v Li-ION 21700 cells (Assembled as 7.4v 2s Battery pack)

2 x 3.7v Lithium-polymer cells (Assembled as 7.4v 2s Battery pack)



DO NOT use

3.6v Li-ION cells (Unless the cell is capable of charging to 4.20v)

2S 6.6v LiFE Battery packs

LiFEP04 cells

### **LIFE/LiFEP04 WARNING!**

**Do not use 2s 6.6v LiFE battery pack, or LiFEP04 18650 Round cells. Using the built in USB charger with incorrect battery types and voltage may cause damage to the remote control or fire.**

Check the health and condition of the batteries regularly. Do not use damaged cells. Never charge your device unattended. Always charge in a safe area away from flammable materials. If the remote control gets wet or damaged in any way, do not charge it.

RadioMaster is not responsible for any adverse consequences caused by using or misusing this device.

## 1.7. Note about this guide.

This guide covers basic information about your radio. OpenTX software is very powerful and has a large number of programming and mixing functions. Please visit

the site below for a comprehensive software installation guide for more detailed instructions <https://www.open-tx.org>

## 1.8. Specifications

Specifications: 183 \* 212 \* 66 mm

Weight: 736g (excluding battery)

Transmission frequency: 2.400GHZ-2.480GHZ

Transmitter module: Internal Four-in-one multi-protocol RF module

Transmit power: maximum 20dbm

Working current: 400mah

Working voltage: 6.6-8.4v DC

Remote control distance:> 2km @ 20dbm

Open source firmware: OpenTX (remote control) DIY-Multiprotocol-TX-Module (Internal RF Firmware driven by OpenTX)

Number of channels: Up to 16 channels (depending on the receiver)

Display: 4.3-inch TFT full-color display

Gimbals: Non-contact 3D Vector Hall Gimbal

JR / FrSKY Compatible Module Bracket

Upgrade method: Support USB online / SD card offline upgrade

Protocol: Full series DSM2 / X full series Flysky and Flysky 2A FrSKY and many more.

For a complete list of agreements, visit:

[https://github.com/pascallanger/DIY-Multiprotocol-TX-Module/blob/master/Protocols\\_Details.md](https://github.com/pascallanger/DIY-Multiprotocol-TX-Module/blob/master/Protocols_Details.md)

## 1.9. Warranty and Repair

If you experience any problems with your remote-control hardware, please keep proof of purchase and contact the retailer where you purchased TX16s. Also visit <https://www.radiomasterrc.com/> for technical support and to find a repair agent in your region.

## 1.10. Firmware Update and OpenTX Information

For the latest news and information on OpenTX firmware from development team, please visit the OpenTX website at <https://www.open-tx.org>. If you enjoy using OpenTX firmware please consider supporting the development team with a donation.

## 1.11. Disclaimer

OpenTX is an open source firmware. No warranty or implied warranty is given for the quality and reliability of this firmware. If not handled properly, the RC model can cause serious injury or even death. If you decide to use OpenTX firmware, you are solely responsible for your model. Any injury or damage caused by using OpenTX firmware

The authors of OpenTX and RadioMaster assume no responsibility. Use with caution.

## 1.12. Legal status and copyright

This project is free software: you can redistribute and / or modify it in accordance with the GNU General Public License Agreement, V3 version agreement, or (optionally) an updated version agreement issued by the International Free Software Association. You should receive a copy of the GNU General Public License Agreement for the OpenTX project. If not, see [www.gnu.org/licenses](http://www.gnu.org/licenses).

OpenTX is open source firmware for RC radio remotes. The firmware is highly configurable and has more features than traditional radios. Daily feedback from thousands of users ensures continuous firmware updates as well as stability and quality.

The release of OpenTX firmware hopes that it will benefit the public, but it has no warranty; it does not include implied commercial licenses or applicability for a special purpose. For more details, see the GNU General Public License Agreement.

OpenTX source files and more can be found at <https://github.com/opentx/opentx>.



## 2. OpenTX Companion software (OpenTX companion)

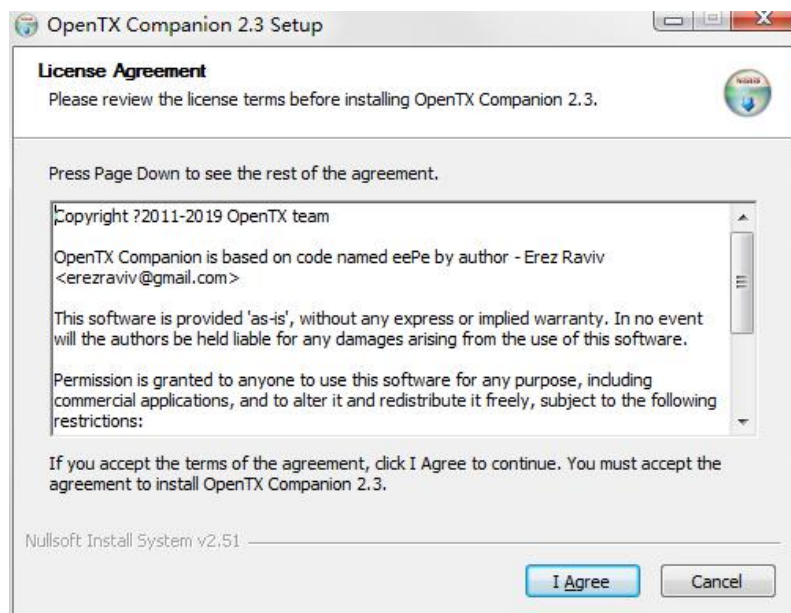
The OpenTX Companion remote control support software is used for many different tasks, such as loading OpenTX firmware to the remote, backing up model settings, editing model settings, and running the remote simulator.

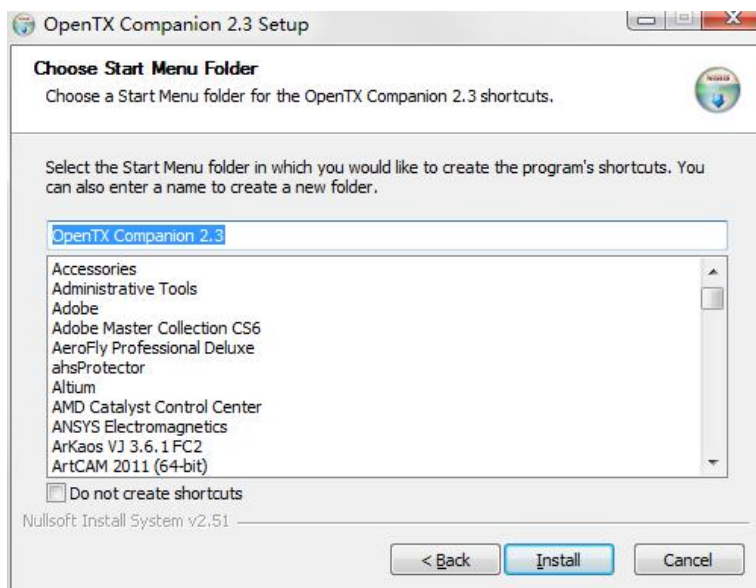
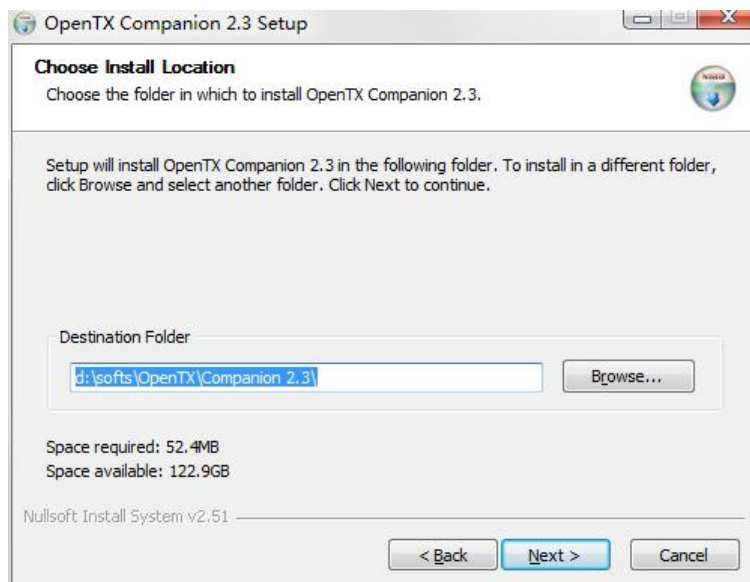
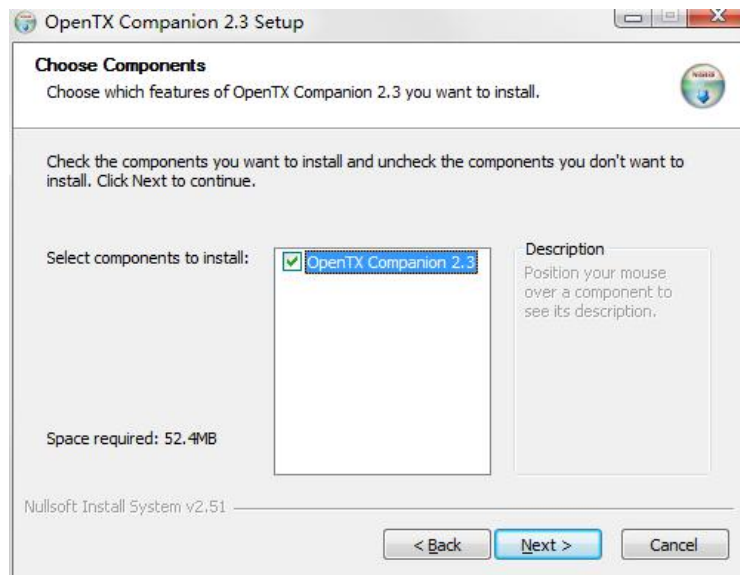
You can run OpenTX Companion software on multiple computer platforms. OpenTX Companion software supports common systems such as Windows, Mac OS X, and Linux. Even without a remote control, you can experience all the functions and settings of the remote control in a computer simulator.

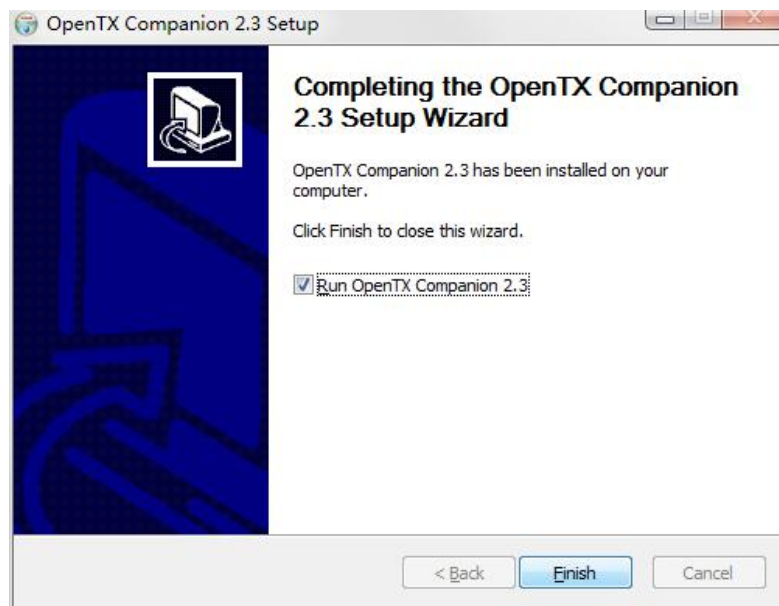
You can get the latest version of OpenTX Companion software here: <http://www.open-tx.org/>

### 2.1. Software Download and Installation

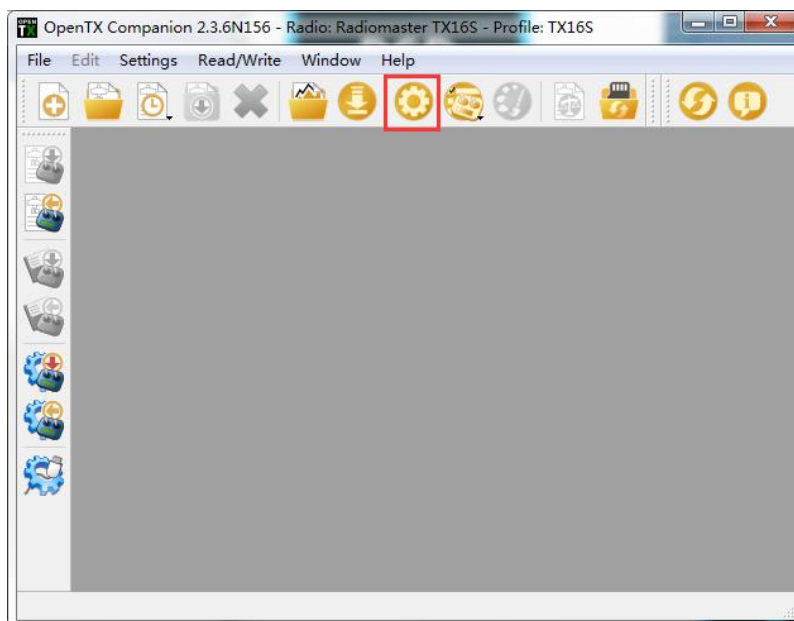
1. Download the latest version of OpenTX Companion software from <http://www.open-tx.org/>.
  2. Install OpenTX Companion software (take windows version 2.3.6 as an example)
- Double-click the installer companion-windows-2.3.6.exe.

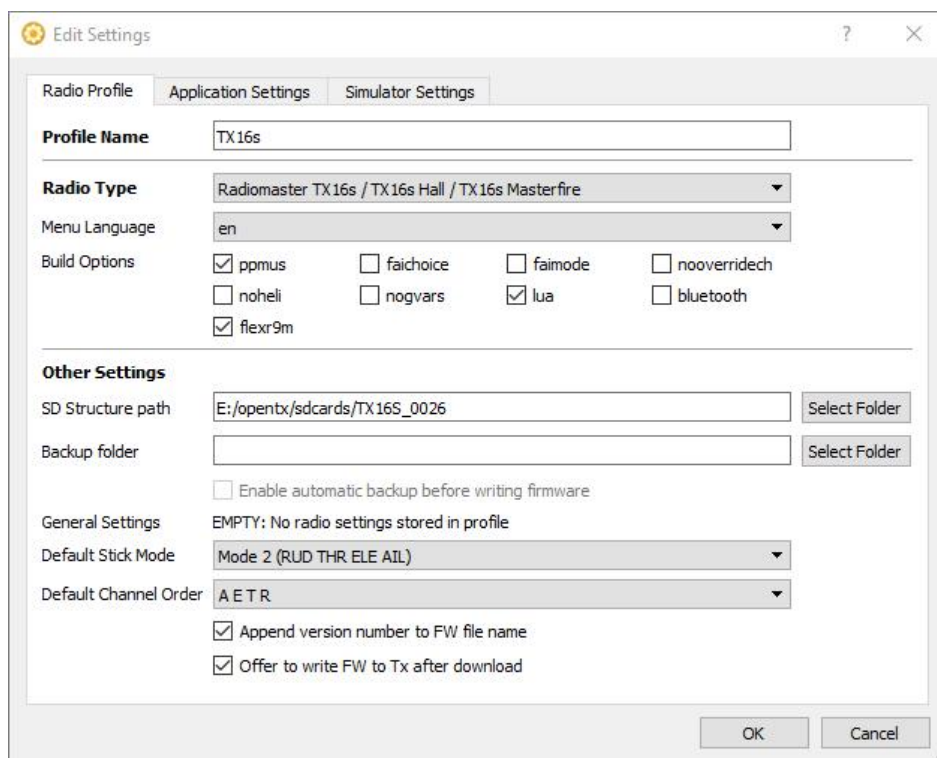






At this point, the OpenTX Companion software installation is complete. Please continue to follow the instructions below to continue setting the software to match the RadioMaster TX16S remote control:





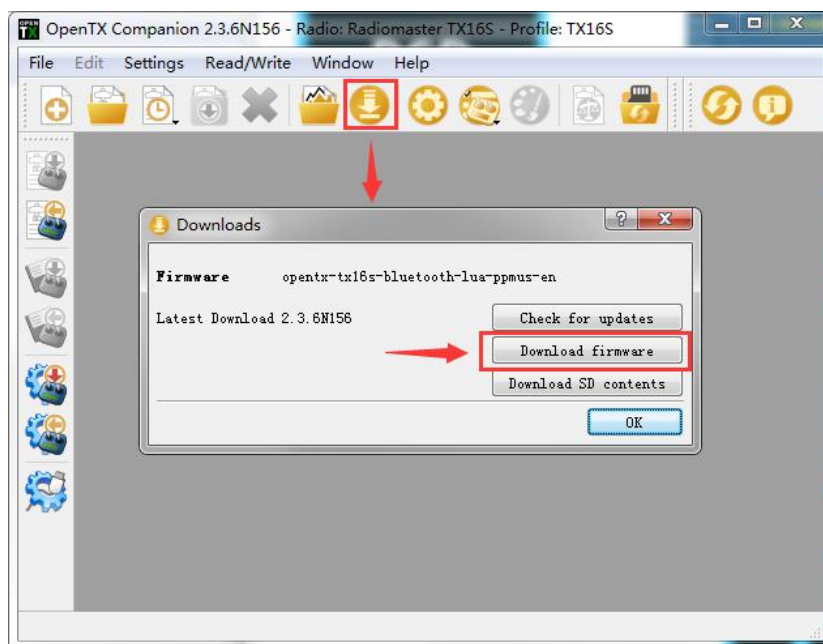
## 2.2. Using Companion software to upgrade remote controller firmware

After the above settings are completed, click the firmware download button to download the firmware.

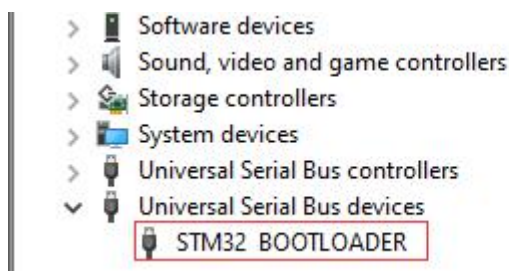
Note: The RadioMaster TX16S remote control is pre-installed with stable and reliable OpenTX firmware when it leaves the factory. If there is no special need, please do not update the firmware unnecessarily. Incorrectly flashing firmware may leave your radio inoperable. Only proceed with updates if you are confident in your understanding and ability to do so.

If you are required to update the firmware to for functional upgrades, please carefully follow the instructions below. Before updating the firmware, make sure that all steps are correct and operate carefully to ensure that your remote control is successfully updated.

If not required, please skip this section.

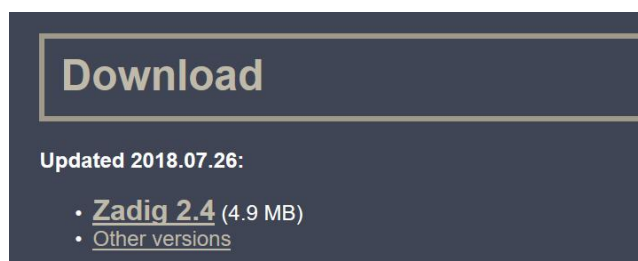


Before writing the firmware, please make sure that the remote control is turned off, and plug in the supplied USB-C (TYPE-C) cable. The following device name will appear in the computer device manager:



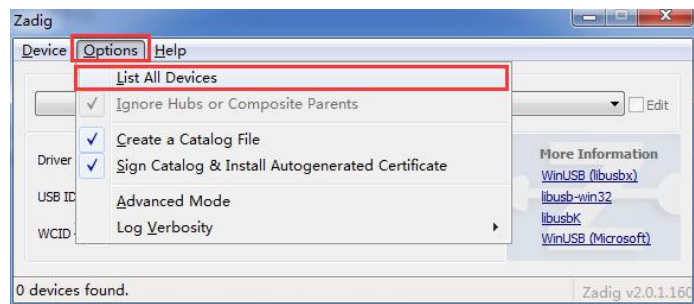
Before writing the firmware for the first time, you need to replace the STM32 BOOTLOADER driver to ensure that the OpenTX Companion software can recognize this hardware type and write the firmware correctly. The replacement method is as follows:

Download the latest version of the universal driver replacement software Zadig.exe from <https://zadig.akeo.ie/>

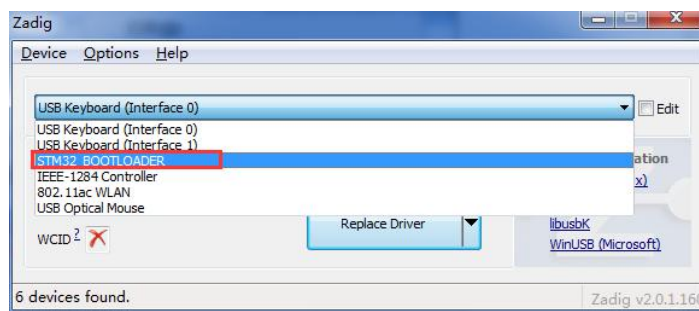


A. In the Windows system, right-click Zadig-2.4.exe and select Run as administrator

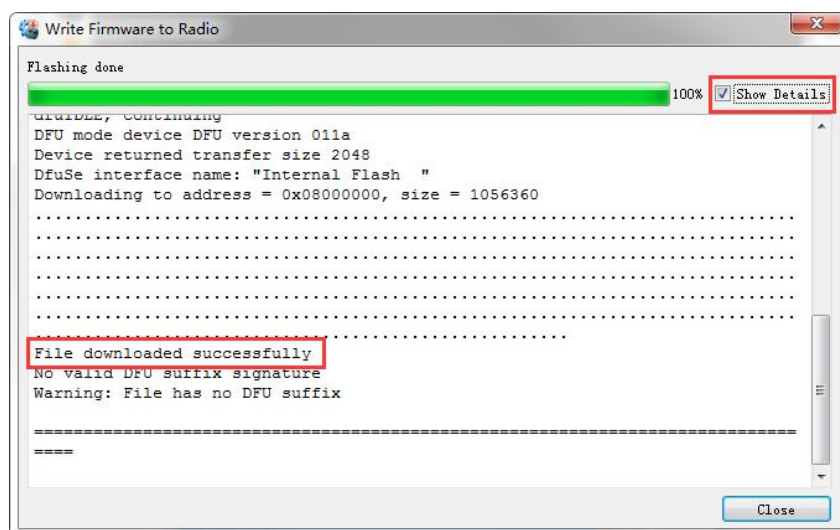
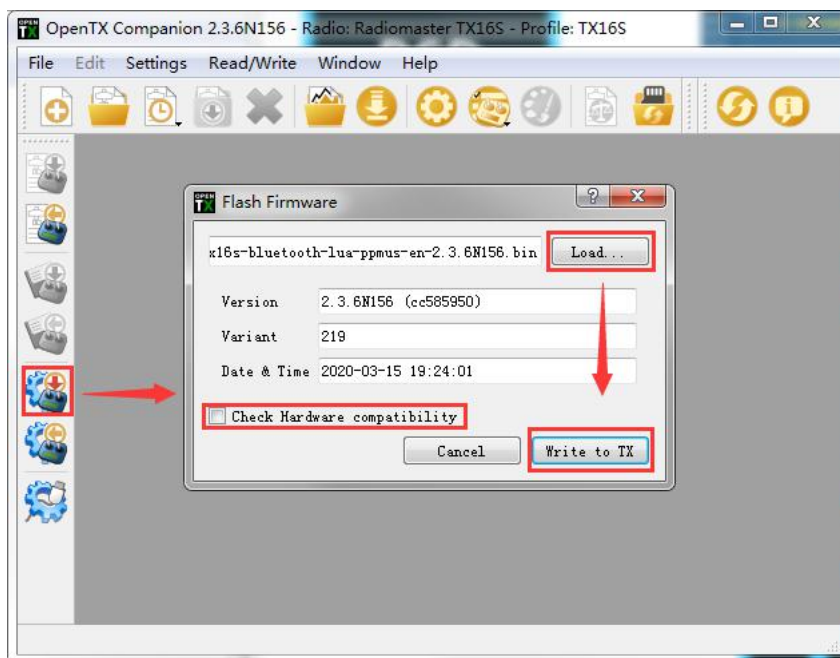
B. In the Zadig software, select Options-> List All Devices to view the device list



C. Drop-down list and find STM32 BOOTLOADER device



D. Click the Replace Driver button (if the driver has been installed before, Reinstall Driver will be displayed) to replace / install the driver. After the driver installation is completed, you can use OpenTX Companion to write the firmware to the remote controller correctly.



At this point, the firmware of the remote control is successfully written. Unplug the USB-C (TYPE-C) and proceed to the first boot procedures.



### 3. First boot

Press and hold the power button to boot. Before entering the main interface, the system will check the position of the throttle stick and switch and other startup conditions. If the startup conditions are not met, there will be a corresponding error prompt. You need to clear it or press any key to move forward

**Throttle warning:** This is a warning that the throttle is not at the lowest position when the radio is turned on. You can set the throttle stick to the lowest position or press any key to skip. You can also turn off the throttle state option in the MODEL SETUP menu. Throttle alarm.



**Switch warning:** This is a warning that a switch on the remote-control is not in the default position. (The default setting is that all switch directions are up ↑)





**Failsafe not set warning:** This is a warning that the remote-control fail-safe protection is not set.



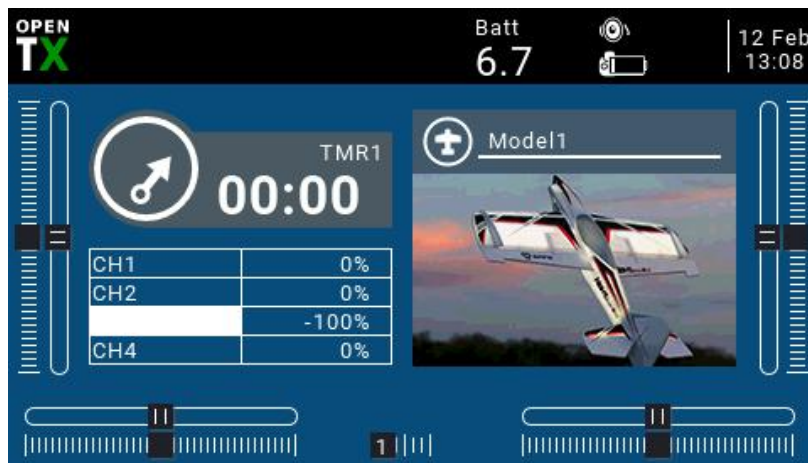
**Alarm Off Warning:** A similar warning will appear if the sound mode of the remote-control settings page is set to mute.



**SD card warning:** If the SD card file version used does not match the remote controller firmware version, this warning will appear. The figure requires 2.3V0026 version (the SD card content needs to be updated when upgrading the firmware).



**First page:** Below is an example of the default first page of the system, you can customize the display elements in the page as required.

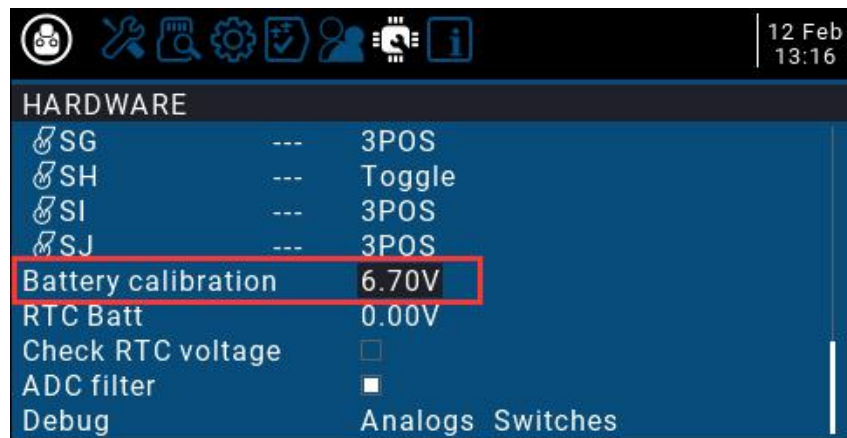


### 3.1. Calibrate the battery voltage

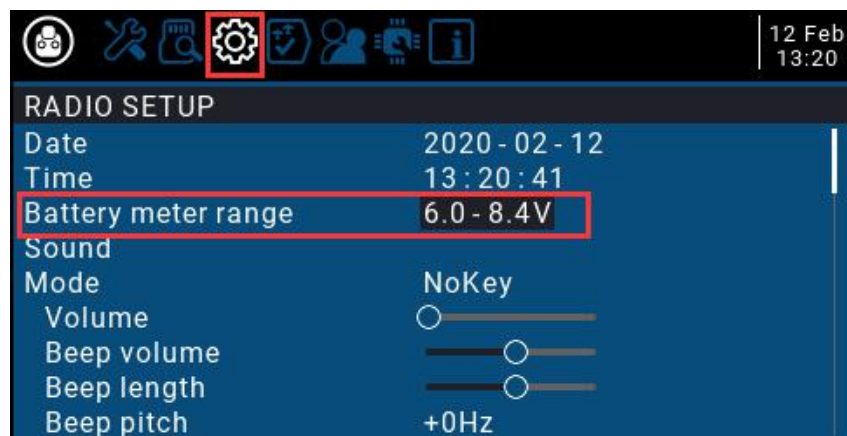


This example is for using 2 x 3.7v (2s 7.4v) 18650 Li-ion batteries in the supplied tray batteries sold separately, a 21700 2s 7.4 Li-ion pack (sold separately) or a 2s 7.4v Standard voltage Li-poly pack (sold separately)

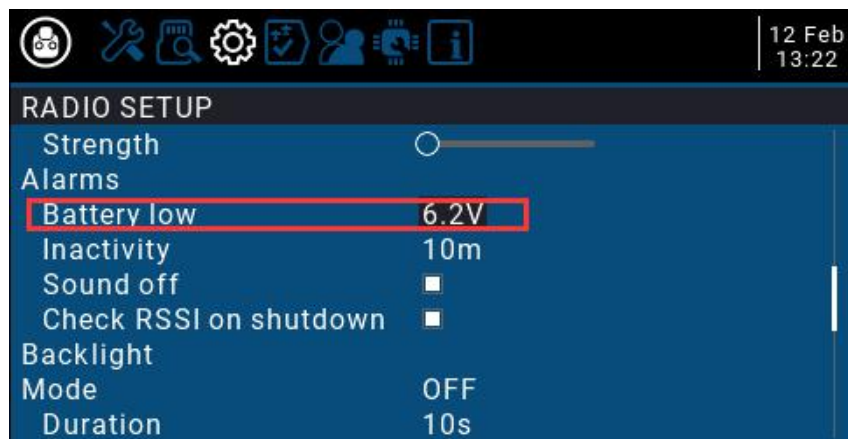
A. Press and hold the [SYS] button to enter the system settings. Press the [PAGE] key to move to the HARDWARE page, scroll to the bottom of the page, select Battery calibration, and enter the actual measured battery voltage.



B. Scroll to RADIO SETUP, and enter the battery level range in the Battery meter range as shown below.



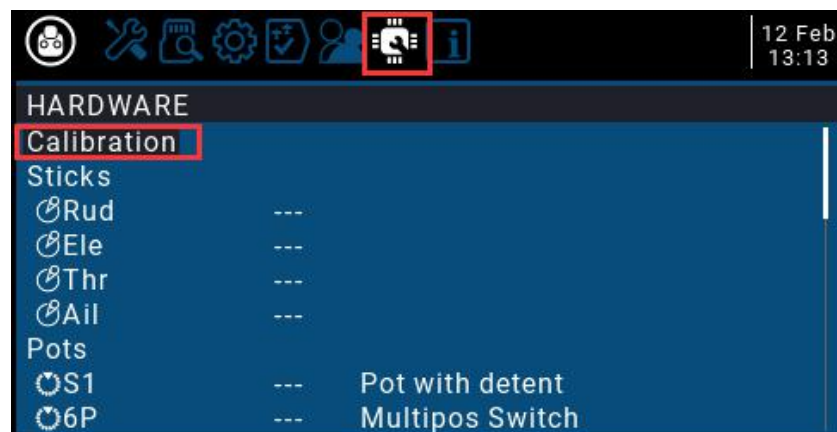
B. On the current page, turn the scroll wheel to find Battery low (low voltage alarm), and fill in the alarm voltage as shown below. When the remote-control voltage is lower than the current set voltage, the system will play a voice alert and report that the battery voltage is low.



## 3.2. Calibrating Gimbals

Each TX16s is calibrated in the QC process however due to varying shipping conditions we suggest to calibrate your radio before first use.

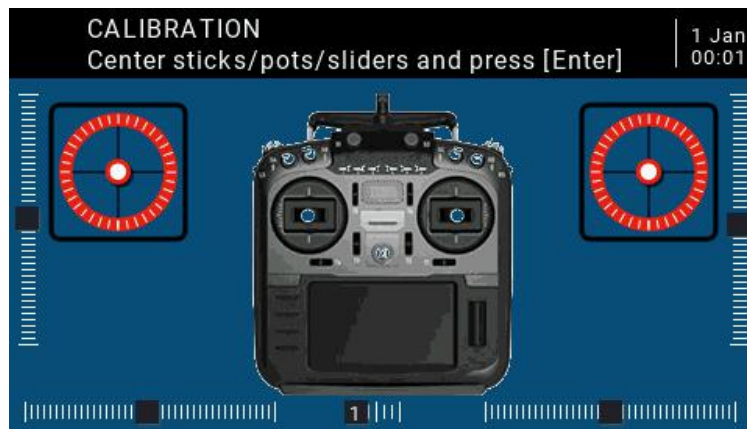
A. In the system settings, scroll to the HARDWARE page, select the Calibration item, and press OK to enter the settings.



B. Follow the text prompts at the top for calibration. The first step prompts, press the confirmation key to start



C. In the second step, place all the gimbals, knobs, and side sliders in the middle position. The system obtains the midpoint value, and then press the confirmation key to continue to the next step.



D. The third move all the gimbals, knobs, and side sliders of to their respective maximum and minimum positions. The system will record the maximum and minimum values. At this time, 6POS (six position button) may be pressed one by one. The system records the value of each button. The value of the key can be viewed at the bottom of the page. After all the above steps are completed, press Enter key to complete the calibration, and the system automatically returns to the previous page.



**Important Note on STICK Calibration.**

Use a left / right / up / down pattern when calibrating the sticks for the most accurate calibration.



Do not make a circular motion when calibrating sticks.





### 3.3. Set the default Gimbal mode and the default channel output order.

In the system settings, turn the page to the RADIO SETUP page, select the scroll wheel to the bottom of the page, you can see

Default channel order: AETR

Mode (Gimbal Mode): Set by factory depending on the Mode you purchased.

Because the channel input order of the built-in multi-protocol transmitting module of the RadioMaster TX16S remote control is AETR, in the Default channel order option, be sure to select the AETR order

The Mode (gimbal mode) can be selected according to your personal preferences:

Mode 1 (right-hand throttle / Japan)

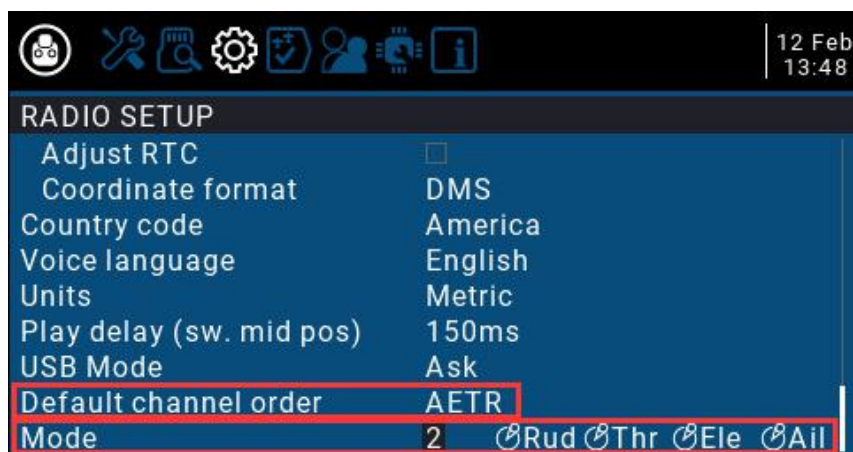
or

Mode 2 (left-hand throttle / American)

The icons on the right from left to right indicate the names of the gimbals corresponding to the position of the gimbal on the remote control.

Left gimbal landscape Left gimbal portrait Right gimbal portrait Right gimbal landscape

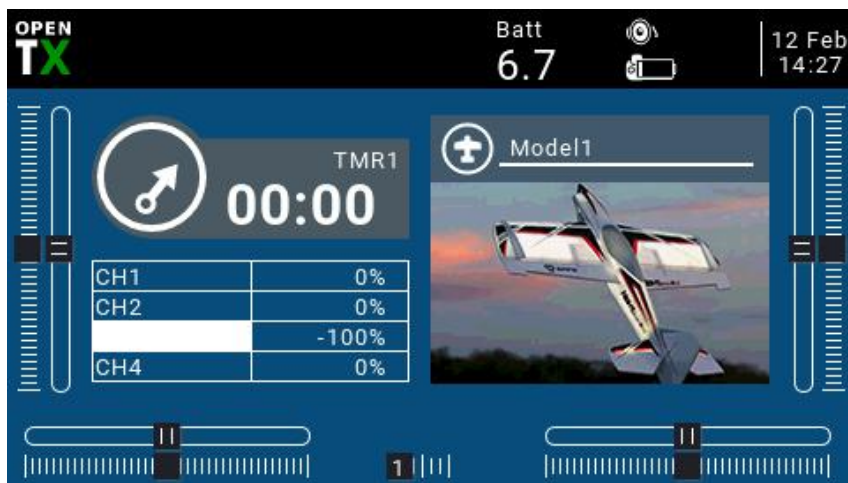
Rud = (direction) Thr (throttle) Ele (pitch) Ail (roll)



## 4. Remote control menu details

### 4.1. Main interface

The default startup screen is as follows. The user can modify the content to be displayed to customize the main interface.



**Top menu bar:** The default top menu bar displays speaker volume, remote control battery level, receiver signal strength (RSSI), and time and date. Batt is a custom top display remote control voltage; users can also add other display information and widgets.

**Model menu bar:** The model menu bar on the right shows the model name and model picture currently in use.

### 4.2. System settings

Long press the left SYS button to enter the system setting page. The system setting page is divided into 7 sections.

**-TOOLS:** Tool page, which includes the setting function of the spectrum analyzer and some third-party equipment, such as the setting function of TBS Crossfire, Frsky specific receiver settings, and Graupner's receiver HoTT protocol settings.

**-SD CARD:** SD card page. In this page, you can view the contents of the SD card, and quickly set the startup screen, model pictures, and the function of flashing the built-in / external module firmware from firmware files loaded on to the SD Card.

**-RADIO SETUP:** The remote-control setup page, this page is the basic functions of the remote control and the settings in the default parameters of the remote control.



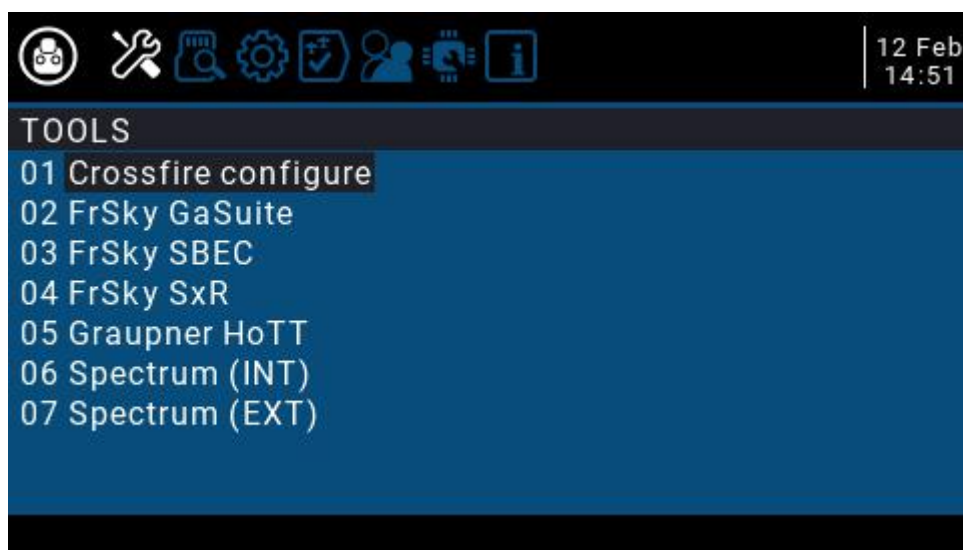
**-GLOBA FUNCTIONS:** Global function page. This page can customize various global functions. Global functions are similar to special functions in model parameters, but global functions are shared by all model, while functions in model parameters are only used by the current model.

**-TRAINER:** Trainer aka Coach function page. In this page, you can set the control ratio of each channel from the student mode remote control in the coach mode, and the intervention ratio of the remote control in the coach mode.

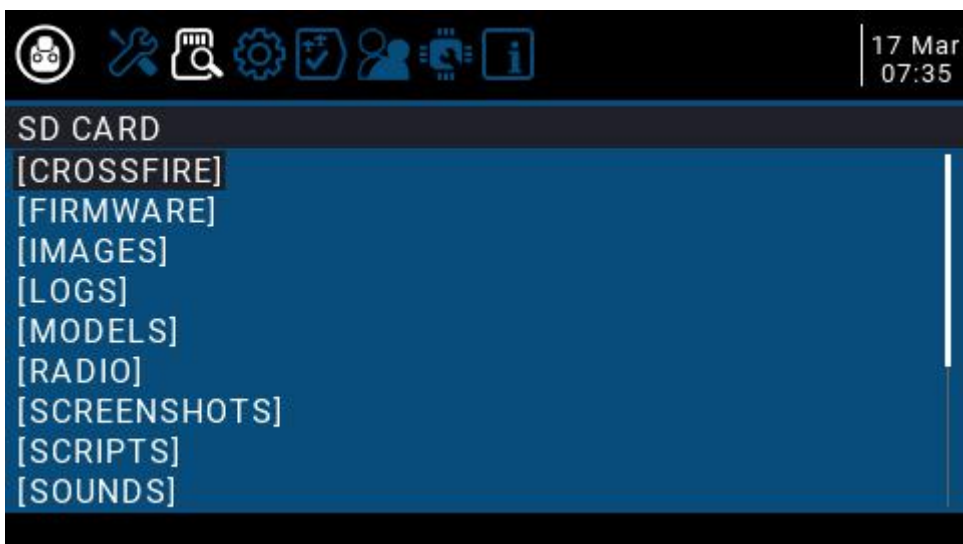
**-HARDWARE:** Hardware setting page. In this page, you can calibrate the gimbal and voltage, set the name of the gimbal, set the functions and names of switches and knobs, and view the underlying parameters of the hardware.

**-VERSION:** Version page. On this page, you can view the remote controller hardware type, OpenTX firmware version, and the functional items included in the current firmware.


#### 4.2.1 TOOLS (Tool page) description



#### 4.2.2 SD CARD (SD Card Page) Instructions



## 4.2.3 RADIO SETUP Instructions

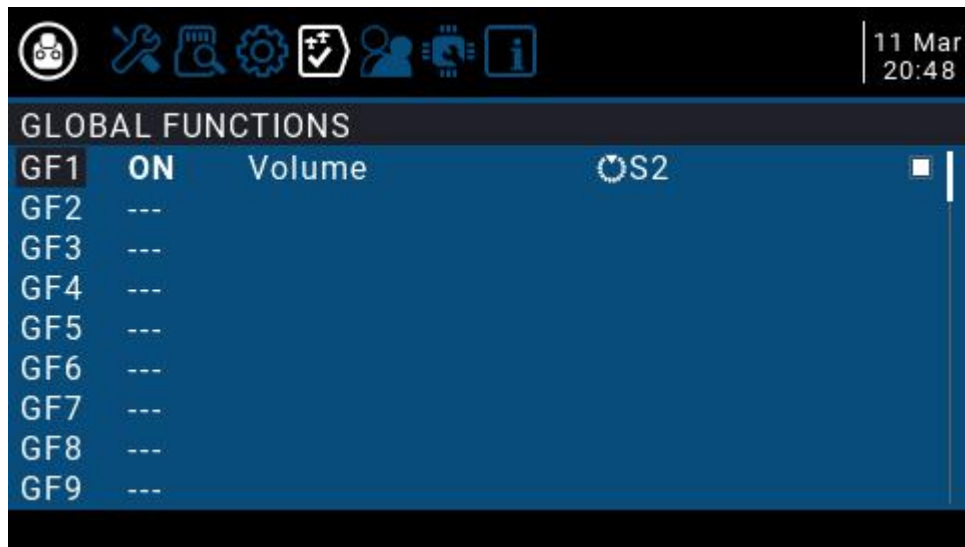


12 Feb  
15:12

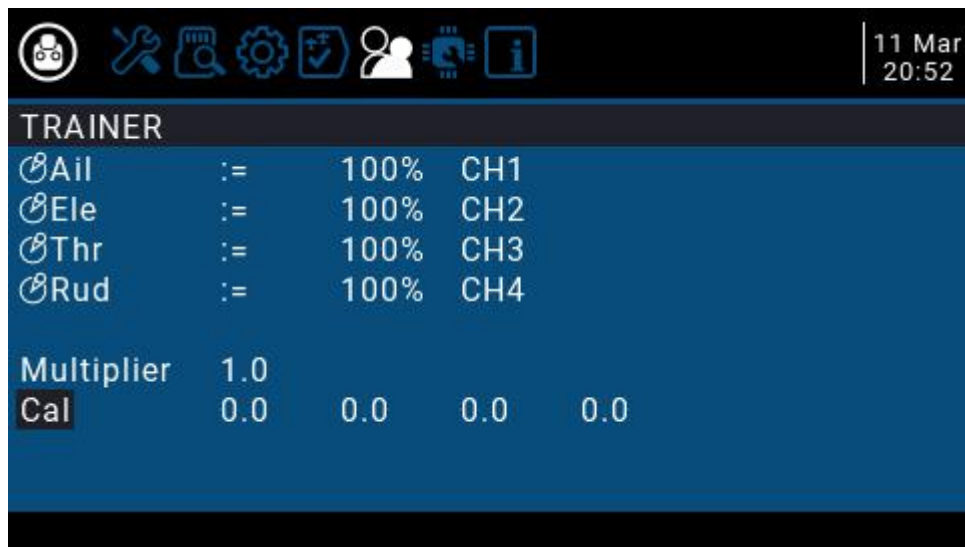
### RADIO SETUP

Date	2020 - 02 - 12
Time	15 : 12 : 26
Battery meter range	6.0 - 8.4V
Sound	
Mode	NoKey
Volume	<input type="range"/>
Beep volume	<input type="range"/>
Beep length	<input type="range"/>
Beep pitch	+0Hz
Wav volume	<input type="range"/>
Background volume	<input type="range"/>
Variometer	
Volume	<input type="range"/>
Pitch zero	700Hz
Pitch max	1700Hz
Repeat zero	500ms
Haptic	
Mode	NoKey
Length	<input type="range"/>
Strength	<input type="range"/>
Alarms	
Battery low	6.2V
Inactivity	10m
Sound off	<input type="checkbox"/>
Check RSSI on shutdown	<input type="checkbox"/>
Backlight	
Mode	OFF
Duration	10s
ON brightness	<input type="range"/>
OFF brightness	<input type="range"/>
Alarm	<input type="checkbox"/>
Pwr Off delay	2s
GPS	
Time zone	0
Adjust RTC	<input type="checkbox"/>
Coordinate format	DMS
Country code	America
Voice language	English
Units	Metric
Play delay (sw. mid pos)	150ms
USB Mode	Ask
Default channel order	AETR
Mode	2 <input type="radio"/> Rud <input type="radio"/> Thr <input type="radio"/> Ele <input type="radio"/> Ail

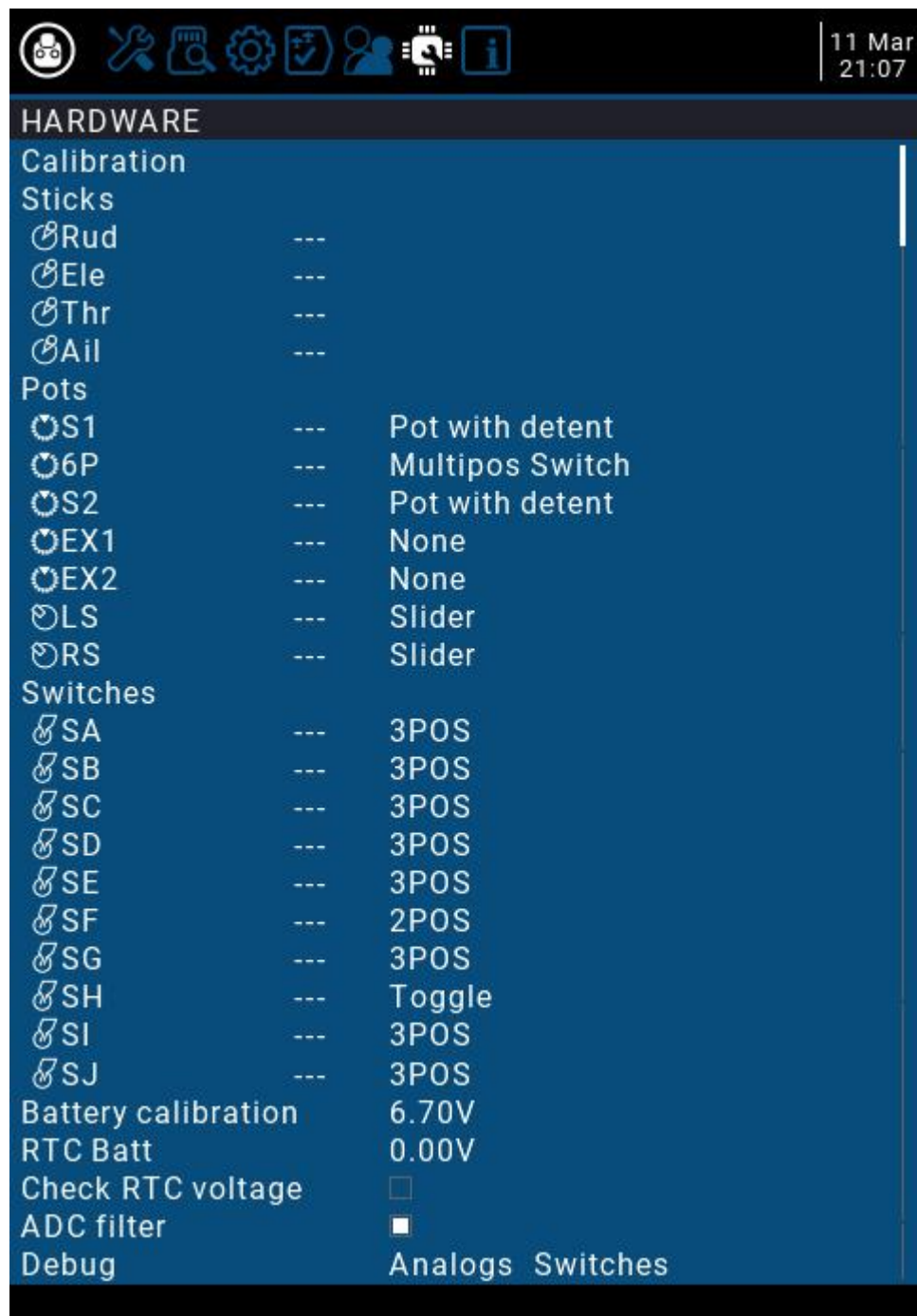
#### 4.2.4 GLOBAL FUNCTIONS (Global Functions Page) Instructions



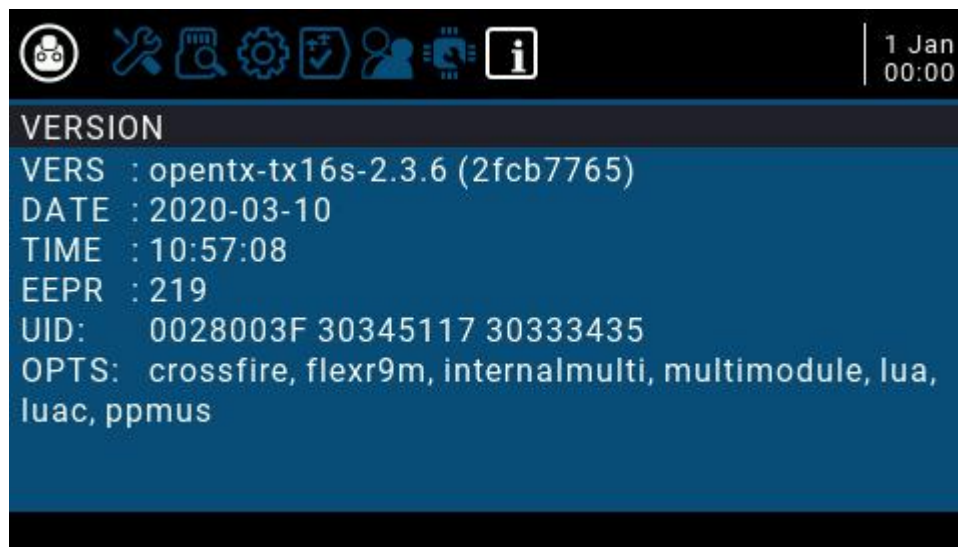
#### 4.2.5 TRAINER (coach function page) description



## 4.2.6 HARDWARE (Hardware setting page) Description



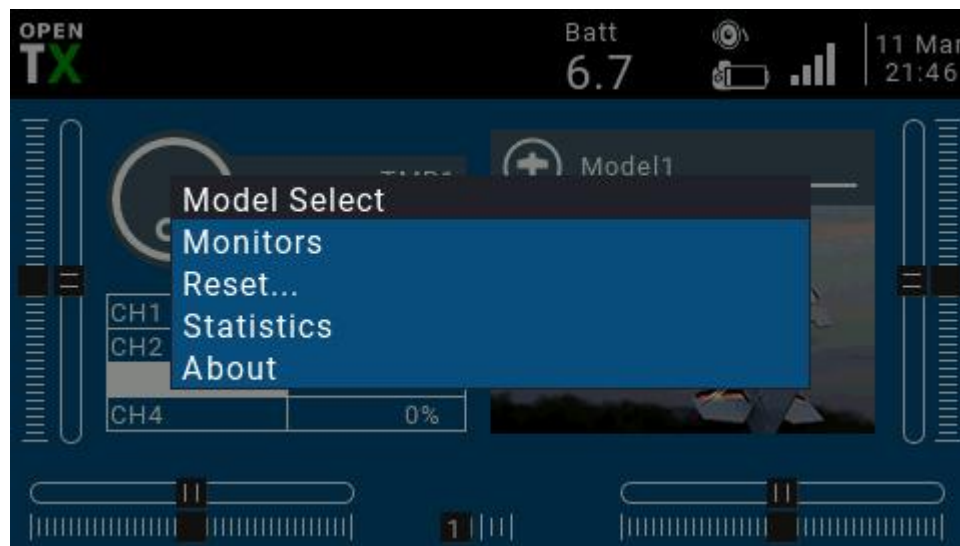
## 4.2.7 VERSION (Version page) description



## 4.3. Model selection

### 4.3.1. Create model and model selection

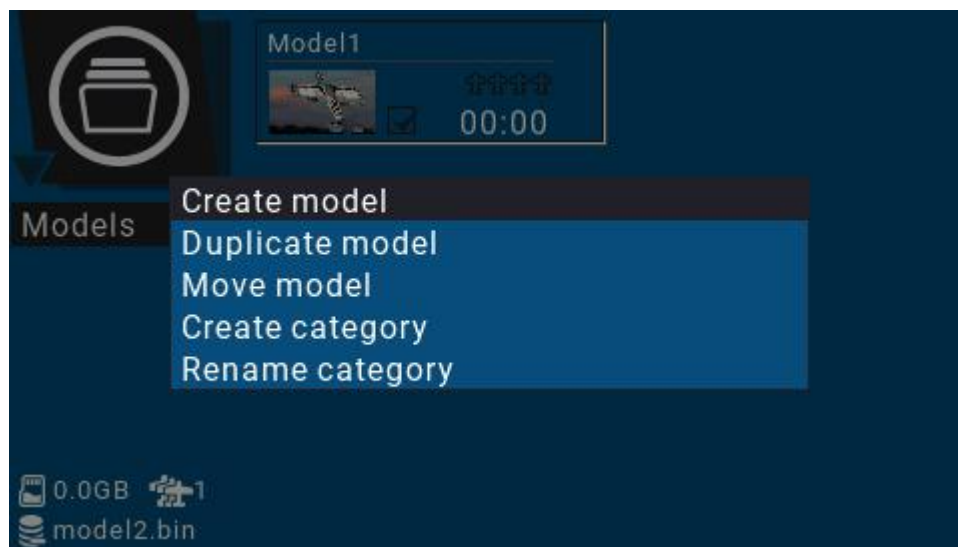
In the main interface, press and hold the ENT key to pop up the menu (ENT is pressing the lower end of the scroll wheel)



Select to enter the model selection page, which is used to select, create, switch, delete and copy models.



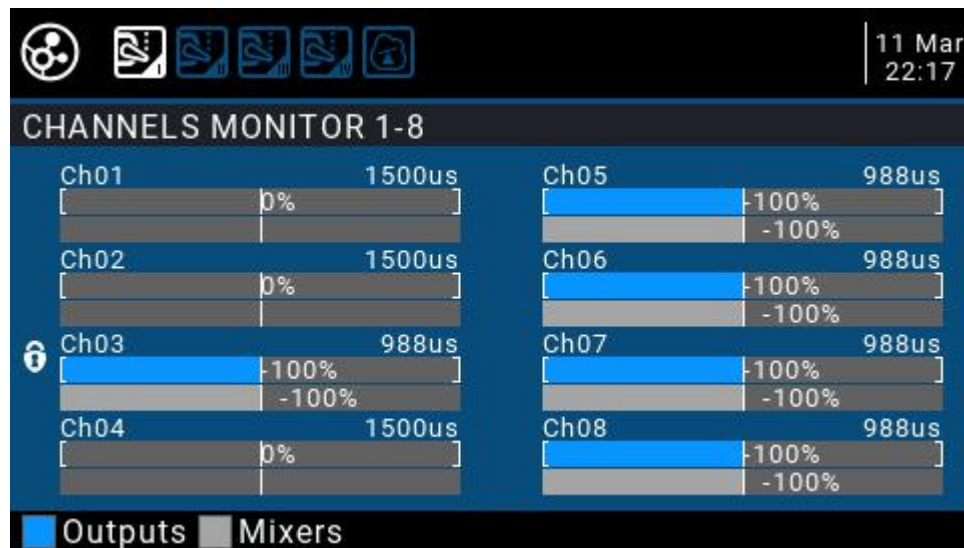
Long press ENT to pop up the model operation menu





### 4.3.2. Channel monitor

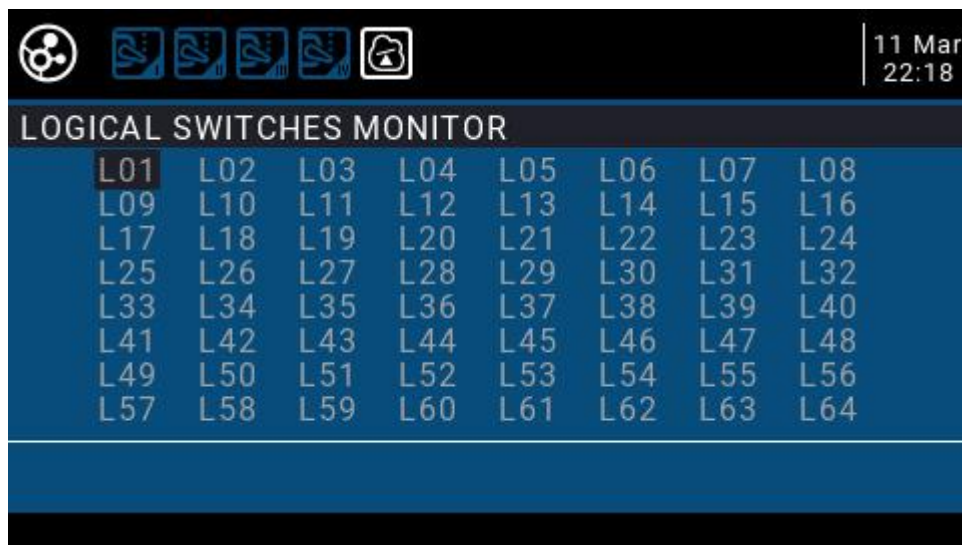
Monitors: used to display the monitoring interface of channel output, mixed control output and logic switch.



You can use the PAGE key to switch to other interfaces.

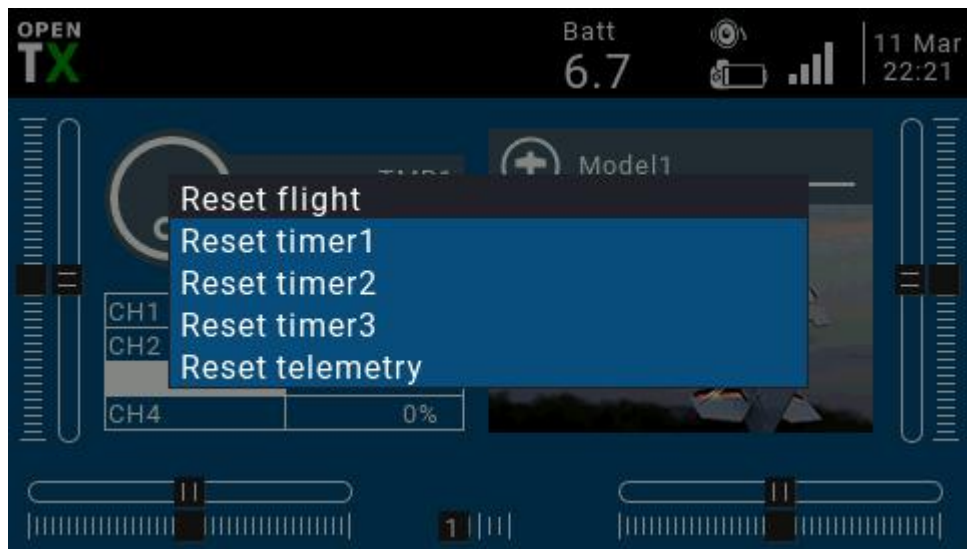
The logic switch page can display the status of 64 logic switches. By default, the inactive state is gray and black (or white depending on scheme) is the active state.

Further reading on Logical Switch Functions: <http://open-txu.org/home/continuing-education/logical-switch-functions/>



L01	L02	L03	L04	L05	L06	L07	L08
L09	L10	L11	L12	L13	L14	L15	L16
L17	L18	L19	L20	L21	L22	L23	L24
L25	L26	L27	L28	L29	L30	L31	L32
L33	L34	L35	L36	L37	L38	L39	L40
L41	L42	L43	L44	L45	L46	L47	L48
L49	L50	L51	L52	L53	L54	L55	L56
L57	L58	L59	L60	L61	L62	L63	L64












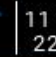
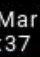
### 4.3.3. Reset function





## 4.4. Model settings (Model Setup)

### 4.4.1 Model settings (Model setup)

11 Mar 22:37

MODEL SETUP

Model name	Model1
Model image	nv2.png
Timer 1	OFF 00:00:00
Name	---
Persistent	OFF
Minute call	<input type="checkbox"/>
Countdown	Silent
Timer 2	OFF 00:00:00
Name	---
Persistent	OFF
Minute call	<input type="checkbox"/>
Countdown	Silent
Timer 3	OFF 00:00:00
Name	---
Persistent	Manual Reset
Minute call	<input type="checkbox"/>
Countdown	Silent
Extended limits	<input type="checkbox"/>
Extended trims	<input type="checkbox"/> Reset
Display trims	No
Trim Step	Fine
Throttle	
Reverse	<input type="checkbox"/>
Source	CH3
Trim idle only	<input type="checkbox"/>
Preflight Checks	
Display checklist	<input type="checkbox"/>
Throttle state	<input checked="" type="checkbox"/>
Switch positions	A↑ B↑ C↑ D↑ E↑ F↑ G↑ Ix Jx
Pots & sliders	OFF
Center Beep	RETA12LR
Use global funcs	<input checked="" type="checkbox"/>
Internal RF	
Mode	MULTI FrSky D8
Module Status	No MULTI_TELEMETRY detected
Channel Range	CH1 - CH16
Receiver No.	00 <input type="radio"/> Bind <input type="radio"/> Range
RF Freq. fine tune	0
Bind on channel	<input type="checkbox"/>
Disable Telemetry	<input type="checkbox"/>
Low power mode	<input type="checkbox"/>
External RF	
Mode	OFF
Trainer	
Mode	Master/Jack

## Model Setup Detailed options:

**Model name:** Enter your model name here.

**Model image:** You can select a picture file as the model logo in the BMP folder of the SD card. Pictures can be viewed using the SD card manager.

### Timer1-3:

Up to 3 fully programmable timers that can count up or down.

<b>ON</b>	Timer is always on
<b>Tht</b>	Timer always on once throttle is not all the way down
<b>THs</b>	Timer on when throttle is not all the way down
<b>TH%</b>	Timer speed proportional the throttle THR 100% Timer 1 second intervals, THR 50% Timer 2 second interval
<b>Time Value</b>	Setting the timer to a value above 00:00 puts it into count down mode

**Name:** Name the timer

**Persistent:** Timer retains its value when the Tx is powered of and on or the model is changed

**Minute call:** Required SD card with sound pack installed. At each minute the value spoken.

**Countdown:** -Countdown broadcast, default 10s (10 seconds)

Silent	Quiet mode
Beeps	Beep
Voice	Voice broadcast countdown
Haptic	Vibration alert

**Extended limits:** Expand the limit. After checking, set the channel rudder limit to  $\pm 125\%$  (default maximum  $\pm 100\%$ ).

**Extended trims**: Fine-tuning extension, allowing fine-tuning to cover the entire gimbal range, instead of  $\pm 25\%$

**Display trims**: Modify the precision of the fine-tuning step. The accuracy can be modified according to actual requirements.

**Throttle**: Throttle related settings

**Reverse**: Throttle reverse

**Source**: Throttle operation source (input source), because the throttle trigger timer is used, such as the THs function, it is usually set to the throttle channel instead of the gimbal, so that the throttle lever operation triggers the timer correctly

**Trim idle only**: Throttle trim only affects the low position, where trim only affects the idle part of the throttle stroke and does not touch the entire throttle range.

**Preflight Checks**: Pre-flight check, when booting or loading the model, the system will check the following default settings, if it does not match the following model settings, the system will pop up a security warning page

**Display checklist**: Show checklist

**Throttle state**: Throttle status warning, when the remote control is powered on or the model is loaded, if the throttle stick is not at the lowest position, a warning will be issued

**Switch positions**: Switch position check, defines whether the remote-control checks whether the switch is in a predetermined position when the remote control is powered on or when loading a model. To set them, place all the switches in the way you like, and then press and hold ENT (the confirmation key), the system will save all current switch positions as default values

**Pots & sliders**: Check the position of the knob and slider. The default position of the preset knob and slider is the same as above.

**Center Beep**: Center prompt sound, select whether the gimbal, knob and slider will emit a prompt sound when reaching the center point.

**Use global funcs**: Use global function settings, choose whether to apply global function settings to the current model

**Internal RF:** Built-in wireless RF module, built-in 4in1 multi-protocol RF module, please refer to multi-protocol RF module manual for usage

**External RF:** External RF module, compatible with many mainstream RF modules

**Trainer:** Trainer Mode

**Mode:**

Master/Jack	Audio cable connection, coach host mode
Slave/Jack	Audio cable connection, student slave mode
Master/Bluetooth	Bluetooth wireless connection, coach mode (requires external Bluetooth module)
Slave/Bluetooth	Bluetooth wireless connection, student slave mode (requires external Bluetooth module)
Master/Multi	4in1 multi-protocol module coach host mode (This function needs to add an external 4in1 multi-protocol module as coach input receiver RX mode)

#### 4.4.2. Flight Mode (Flight Modes)

The flight mode allows you to set the corresponding fine-tuning value for a specific mission or flight behavior. This item is mainly used for fixed-wing gliders to use different fine-tuning values in different environments. You can customize the fine-tuning value of 1-6 channels, and you can set it for each flight. Mode setting smooth slow-in slow-down time.

+

☰

H

»»»

⏮

⏪

⏩

⏭

⏮

⏪

⏩

⏭

⏮

⏪

⏩

⏭

☑

📶

📶

12 Mar

01:27

FLIGHT MODES

FM0	---	N/A	:0	:0	:0	:0	:0	:0	0.0	0.0
FM1	---	---	:0	:0	:0	:0	:0	:0	0.0	0.0
FM2	---	---	:0	:0	:0	:0	:0	:0	0.0	0.0
FM3	---	---	:0	:0	:0	:0	:0	:0	0.0	0.0
FM4	---	---	:0	:0	:0	:0	:0	:0	0.0	0.0
FM5	---	---	:0	:0	:0	:0	:0	:0	0.0	0.0
FM6	---	---	:0	:0	:0	:0	:0	:0	0.0	0.0
FM7	---	---	:0	:0	:0	:0	:0	:0	0.0	0.0
FM8	---	---	:0	:0	:0	:0	:0	:0	0.0	0.0

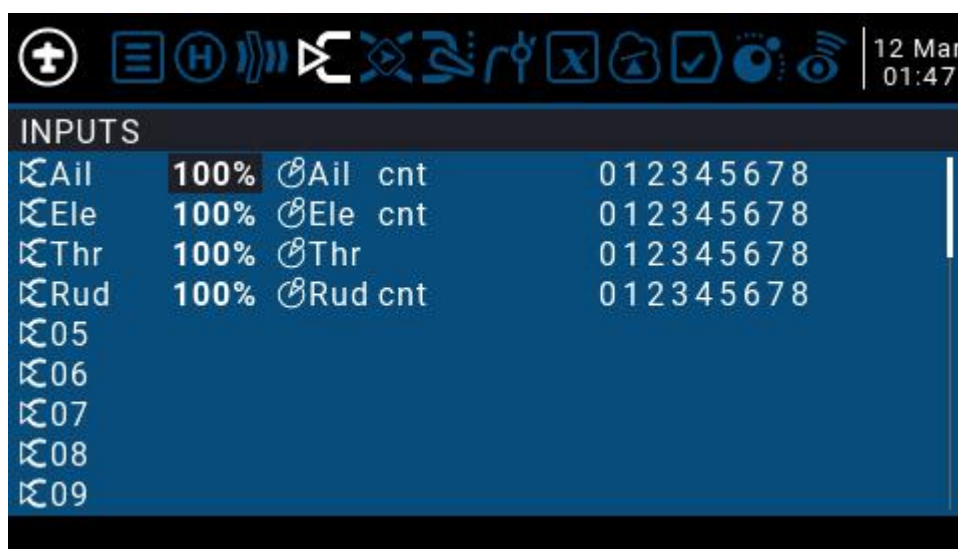
There are 8 flight modes plus the default FM0 available. The first item of FM1-FM8 requires a trigger switch. When no switch is on, FM0 is enabled by default.

Name	Define a name for the flight mode
Switch	Select the trigger switch for the flight mode. It can be a physical switch or a logical switch.
Trim selection array	Adjust the fine-tuning value of 1-6 channels according to your actual needs
Fade in Fade Out	Slow Ease In / Ease Out Time Settings
Check Flight Mode Trims	At the bottom of the screen (below FM8) you are reminded to check the fine-tuning of each flight mode. According to the currently selected FM number, the corresponding reminder message is displayed, for example, if the flight mode FM2 is active, it will display "Check FM2 trims"

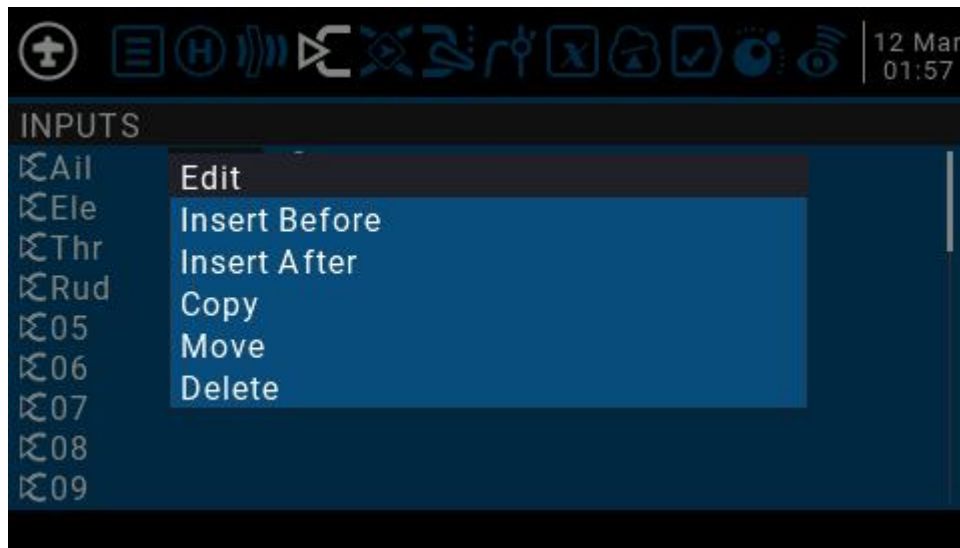
#### 4.4.3. Input Source (Inputs)

The Inputs page defines the input source. Before outputting to the channel, you can make preliminary settings for the input source, such as limiting the amount of operation, increasing the curve, using the switch pair to switch, etc.

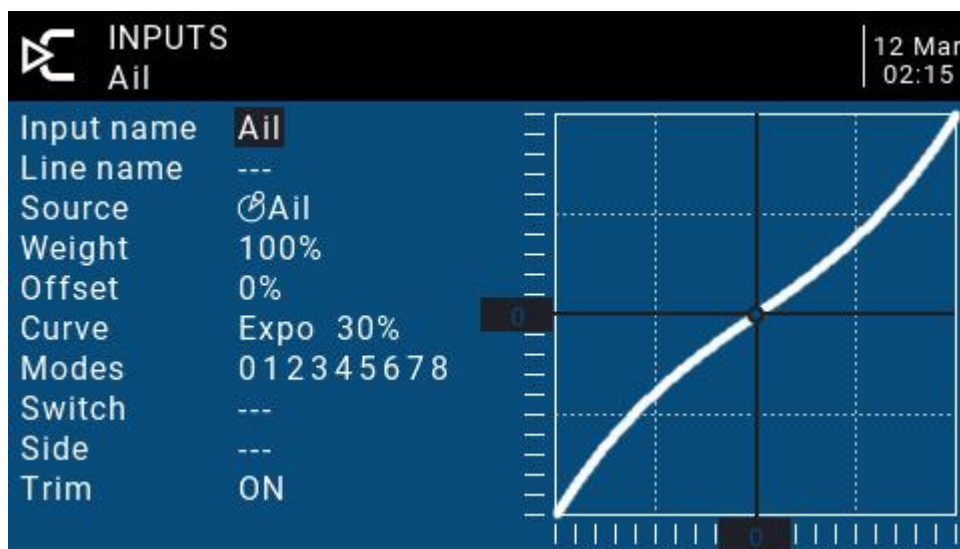
The input source can be a physical operation source such as a gimbal, knob, or switch of the remote control, or it can be a global variable Gvar, a logical switch, return data, etc.



To set an entry, press and hold the ENT key on the current entry and a submenu will pop up



选择 Edit 进入编辑条目

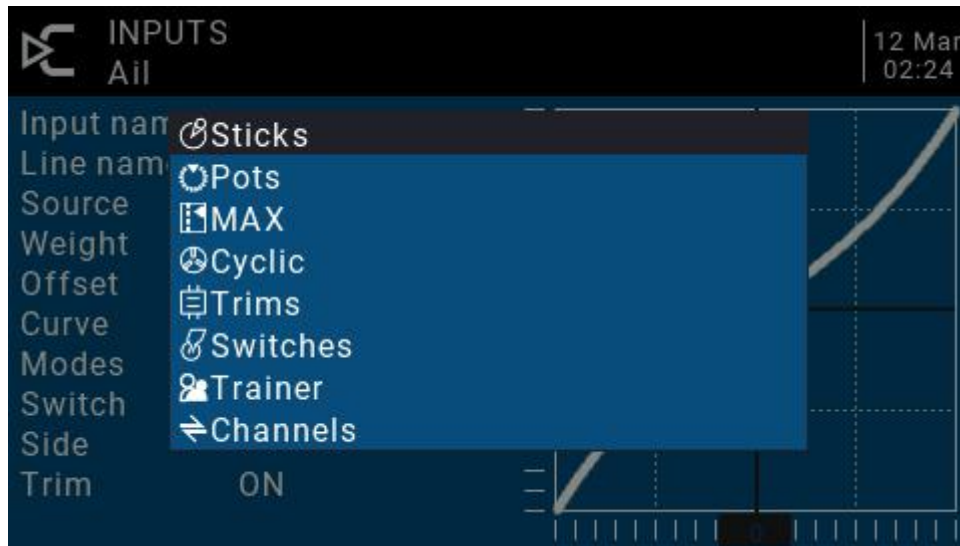


**Input name:** Name of the current entry. Use the scroll wheel to select a letter or number. Press and hold the ENT key to switch between upper and lower case. Press the ENT key to switch to the next character.

**Line name:** Because each entry can have multiple lines of configuration, you can give each line a name to avoid confusion in the future

**Source:** Press and hold the ENT key to enter the input source selection menu. Scroll up or down to the desired category and press ENT to select the corresponding input source





Weight: Normal range is a value between  $\pm 100\%$  will be zoomed to the gimbal operation. If you enter a negative value, for example  $-100\%$  means reverse the output. Note that channel inversion should not use negative values on the Inputs page, and to reverse channels should be reversed on the Outputs page.

**Offset:** Midpoint offset setting

**Curve:** Curve settings

Diff	Adjust the stroke amount on one side with the midpoint as the boundary	
Expo	Expo curve setting. Increasing a positive value will make the gimbal smoother and smoother when approaching the midpoint, while increasing a negative value will make the gimbal more acute when approaching the midpoint.	
Func  Preset function	X>0	Positions above 0 (midpoint) follow the gimbal output, operations below the midpoint are all fixed to the midpoint value of 0
	X<0	The opposite of the previous one
	X	Absolute values, negative values less than the midpoint will always become positive values, and the actual performance is a V-shaped curve
	f>0	Below the midpoint 0 is fixed at midpoint 0, above the midpoint is fixed at 100, the actual performance is that the gimbal becomes 0 and 100 to switch, there is no intermediate process
	f<0	The opposite of the previous one
	f	Above the midpoint is fixed at $+100\%$ , and below the midpoint is fixed at $-100\%$ . The actual performance is that the gimbal becomes $-100\%$ and $+100\%$ to switch. There is no intermediate process.
Cstm	Call custom curve (CV1-CV32), custom curve is set in curve page CURVE	

**Modes:** Select the corresponding flight mode, and the output trimming value that affects this entry can be set by the flight mode entry

**Switch:** Select the switch to activate this item (Note: This setting is added to this item to add multiple lines of different settings to switch, if there is only one line setting, do not set the activation switch, otherwise the switch will cause this item to be completely invalid)

**Side:** Unilateral setting with the midpoint as the boundary. No matter how this item is set, it will be set to unilateral effect by Side.

x>0	All below the midpoint are fixed at 0, and normal output above the midpoint
x<0	All above the midpoint is fixed at 0, and normal output below the midpoint

**Trim:** You can choose whether the fine-tuning is effective for this entry, or you can define a fine-tuning that affects this article separately.

#### 4.4.4. Mix control (Mixer)



Mixing page for channel settings

The mix control page allows you to combine as many input sources as you want and map them to any one or more of the 32 output channels. Finally use the next page (Outputs) to make these purely logical outputs to fit the model device

You have complete flexibility in controlling the mixing from any input to any output channel.



A mix puts one input into one channel. The inputs are configured in the Inputs page, which defines any input type.

The mixing control page can also use other channels as the source of the current channel, and output from the current channel after re-mixing. It can also mix one or more channels to another or multiple channel outputs, which can combine very powerful complex functions.

All inputs range from -100% to + 100%. Gimbals, knobs, sliders, channels, global variables, and coach input.

If you want the servo of the No. 2 plug connected to the receiver to be controlled by lifting (ELE), you only need to create a mixing entry on CH2 and use the Ele input as the source of operation.

Each channel can have many lines, and you can choose the operation between each line. Long press the ENT key and select Insert Before / After to create a new line.

By default, all lines on the same channel are added together, and the next line can choose to be superimposed or multiplied with the channel value of the previous line, and replaced completely.

Please note that the currently active row of settings will be displayed in a bold font, making it easy to recognize the item currently in use at a glance. The CH1 channel shown in the figure is input by the Ail gimbal, and the three states of the SA switch are used to switch three stroke amounts.



To edit a mixing control, use the scroll wheel to select the mixing control item up and down, and press and hold the ENT key to enter the editing submenu. Select Edit and press the ENT key momentarily.



Detailed settings for mixing entries



**Mix name:** Name setting Use the scroll wheel to select letters and numbers, and press and hold the ENT key to switch between upper and lower case. Short press the ENT key to set the next character.

**Source:** Long press the ENT key to pop up the input source category menu.



**Weight:** Channel travel amount, the range is -500 / + 500. The default value is 100. Negative values indicate reverse channel output.

**Offset:** Midpoint offset, you can add the offset of the input value, positive or negative. Range is -500 / + 500

**Trim:** You can choose whether the fine-tuning is effective for this entry, or you can define a fine-tuning that affects this article separately.

**Curve:** Curve settings

Diff	Adjust the stroke amount on one side with the midpoint as the boundary	
Expo	Expo curve setting. Increasing a positive value will make the gimbal smoother and smoother when approaching the midpoint, while increasing a negative value will make the gimbal more acute when approaching the midpoint.	
Func  Preset function	X>0	Positions above 0 (midpoint) follow the gimbal output, operations below the midpoint are all fixed to the midpoint value of 0
	X<0	The opposite of the previous one
	X	Absolute values, negative values less than the midpoint will always become positive values, and the actual performance is a V-shaped curve
	f>0	Below the midpoint 0 is fixed at midpoint 0, above the midpoint is fixed at 100, the actual performance is that the gimbal becomes 0 and 100 to switch, there is no intermediate process
	f<0	The opposite of the previous one
	f	Above the midpoint is fixed at + 100%, and below the midpoint is fixed at -100%. The actual performance is that the gimbal becomes -100% and + 100% to switch. There is no intermediate process.

Cstm	Call custom curve (CV1-CV32), custom curve is set in curve page CURVE
------	---

**Modes:** Select the corresponding flight mode, and the output trimming value that affects this entry can be set by the flight mode entry

**Switch:** Select the switch to activate this item (Note: This setting is added to this item to add multiple lines of different settings to switch, if there is only one line setting, do not set the activation switch, otherwise the switch will cause this item to be completely invalid).

**Warning:** Set the alert tone

**Multpx:** Superposition method, output after superimposing with the value of the previous stroke amount

Add: Additive superposition, the current value is added to the value of the previous line and output

Multiply: multiplication, the current value is multiplied by the value of the previous line and output

Replace: direct replacement, the value of the previous line is directly replaced by the value of this line

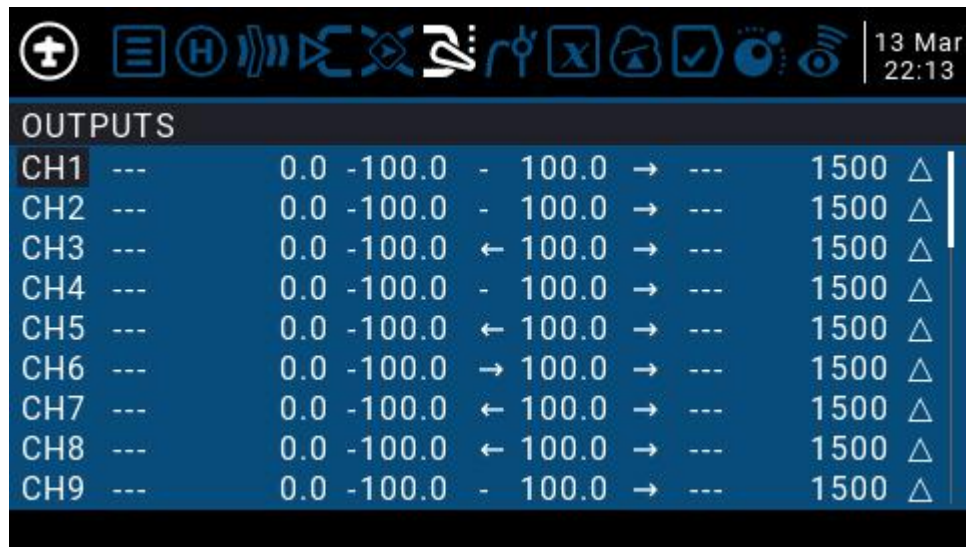
The combination of these operations allows the creation of complex mathematical operations and is often considered one of the biggest benefits of using OpenTX.

**Delay Up/Dn:** The response of the output can be delayed as the input changes. (In seconds).

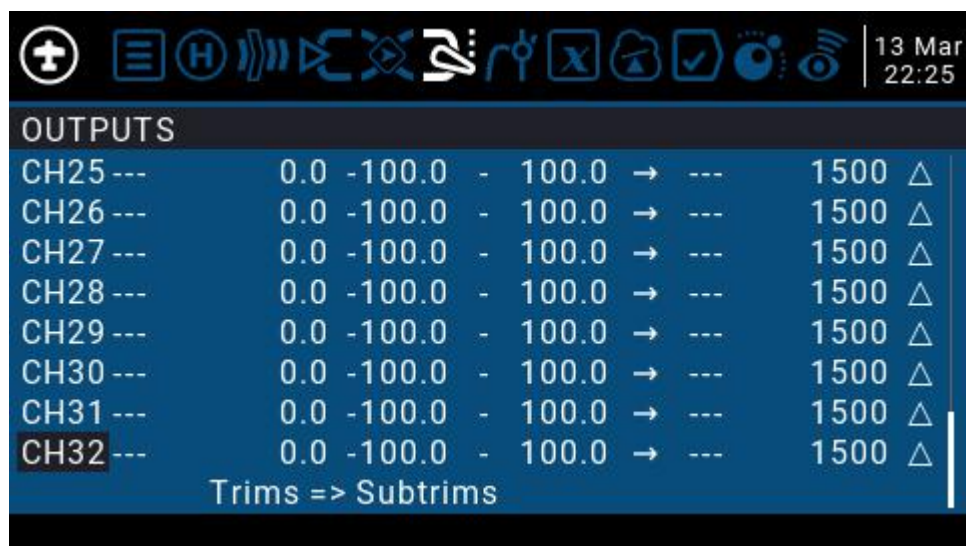
**Slow Up/Dn:** Regarding input changes, the response of the output can be slowed. For example, slow speed can be used to slow down retraction driven by a normal proportional servo. The output will cover the time in seconds from 100 to + 100%.

#### 4.4.5. Output (Outputs)

Total output page, final channel output overall settings



OUTPUTS									
CH1	---	0.0	-100.0	-	100.0	→	---	1500	△
CH2	---	0.0	-100.0	-	100.0	→	---	1500	△
CH3	---	0.0	-100.0	←	100.0	→	---	1500	△
CH4	---	0.0	-100.0	-	100.0	→	---	1500	△
CH5	---	0.0	-100.0	←	100.0	→	---	1500	△
CH6	---	0.0	-100.0	→	100.0	→	---	1500	△
CH7	---	0.0	-100.0	←	100.0	→	---	1500	△
CH8	---	0.0	-100.0	←	100.0	→	---	1500	△
CH9	---	0.0	-100.0	-	100.0	→	---	1500	△



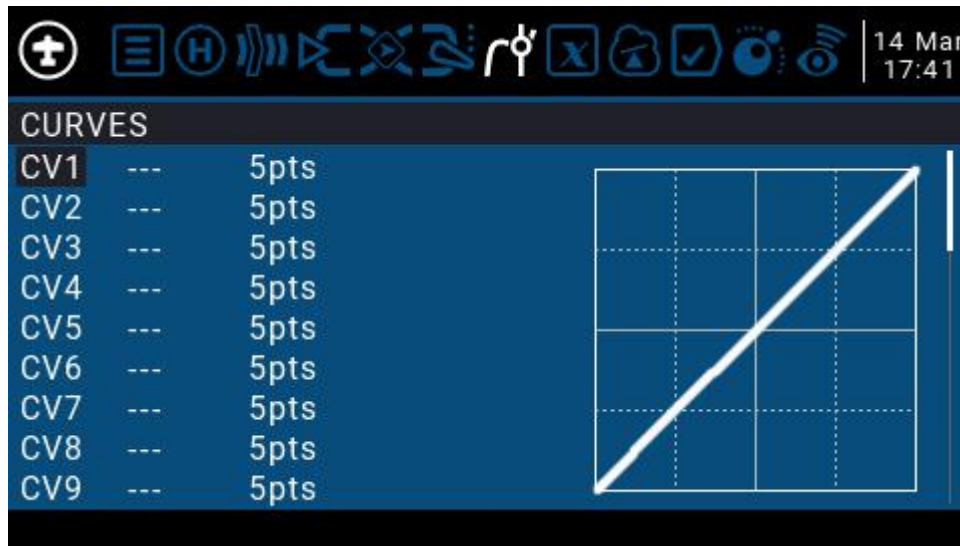
OUTPUTS									
CH25	---	0.0	-100.0	-	100.0	→	---	1500	△
CH26	---	0.0	-100.0	-	100.0	→	---	1500	△
CH27	---	0.0	-100.0	-	100.0	→	---	1500	△
CH28	---	0.0	-100.0	-	100.0	→	---	1500	△
CH29	---	0.0	-100.0	-	100.0	→	---	1500	△
CH30	---	0.0	-100.0	-	100.0	→	---	1500	△
CH31	---	0.0	-100.0	-	100.0	→	---	1500	△
CH32	---	0.0	-100.0	-	100.0	→	---	1500	△

Trims => Subtrims

#### 4.4.6 Curves

The curve can be used to modify the control response in the Inputs, Mixes, or Outputs page. Standard curves containing Expo and Differential can be used directly in these sections. This page is used to customize any kind of curve.

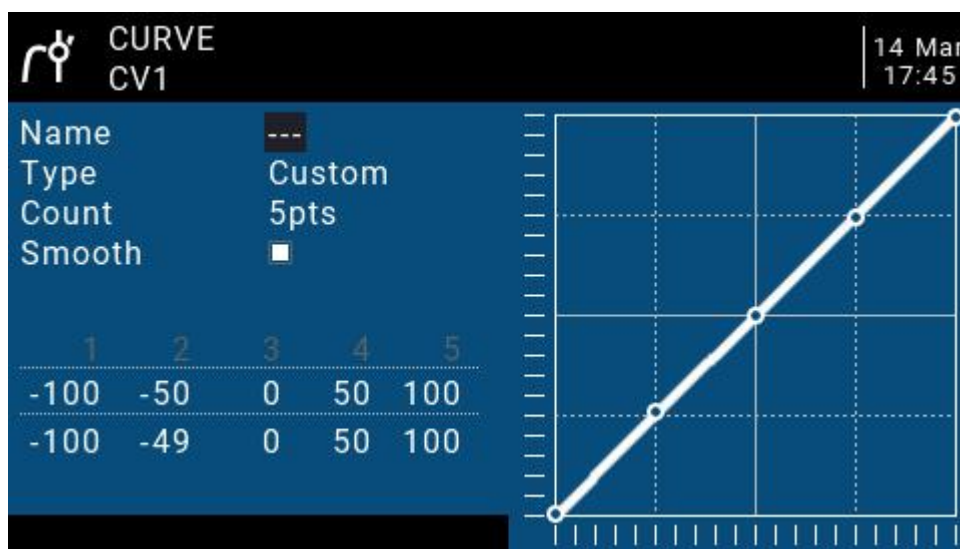
Can set up to 32 curves



The curve can be between 2 and 17 points and can have a fixed or user-definable x coordinate.

X value represents input, such as the course of the gimbal from low to high

Y value represents output, such as the process of channel output from low to high



**Name:** Name the curve, easy to find when recalling the curve in other settings

**Type:** Curve type

Standard	Standard type, only Y point (output) can be edited, ranging from -100 to 100
Custom	Custom types, both X (input) and Y (output) points are editable, ranging from -100 to 100

**Count:** The number of points on the curve, between 2 and 17.

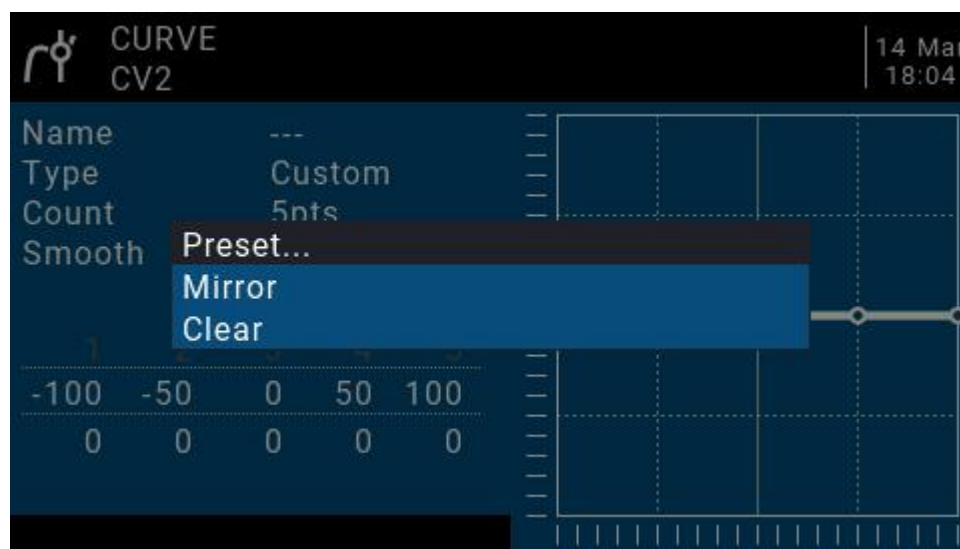


**Smooth:** If checked, create a smooth curve through all points.

When customizing, move the cursor to X and Y coordinates, and change the position of each coordinate point according to your needs.

Depending on the type selected above, this allows writing the X coordinate of a standard curve, or the X and Y coordinates of a custom curve.

Long press the ENT key on the coordinate point to enter the submenu:



**Preset:** Select presets with slopes of  $-45^\circ$ ,  $-33^\circ$ ,  $-22^\circ$ ,  $-11^\circ$ ,  $0^\circ$ ,  $11^\circ$ ,  $22^\circ$ ,  $33^\circ$ ,  $45^\circ$ . When defining more complex curves, choose reasonable presets Will reduce some steps.

**Mirror:** Mirror the curve vertically.

**Clear:** Clear the current curve.

#### 4.4.7. Global variables (Global Variables)

Global variables are customizable values that can be used as temporary values for custom operations. In complex functions, the values of global variables are automatically modified through certain trigger conditions for conditional judgment or any other purpose. Global Variables can be used as input or output real-time adjustment parameters, and can also be used as parameters in flight mode and curve definition. Global variables can be used in any place where numerical values can be entered to achieve some automated control.

They are also specific flight modes, which avoids having to use separate mixing lines with different values for each flight mode. This greatly simplifies mixing pages and makes them easier to understand.



By using the "Adjust GVx" option in the Special Functions page, you can even adjust global variables on the fly, so you can quickly optimize settings such as double-rate ratio, exposure, differential, flap to elevator conversion, and more. If pop-ups are enabled (indicated by! Next to the GV label), when the variable is updated, a pop-up window with the variable name and new value will be displayed on the main view.

"Global" means that global variables can be used to set pages for the entire model, but not for all models. Each model has its own set of global variables.

There are 9 global variables available.



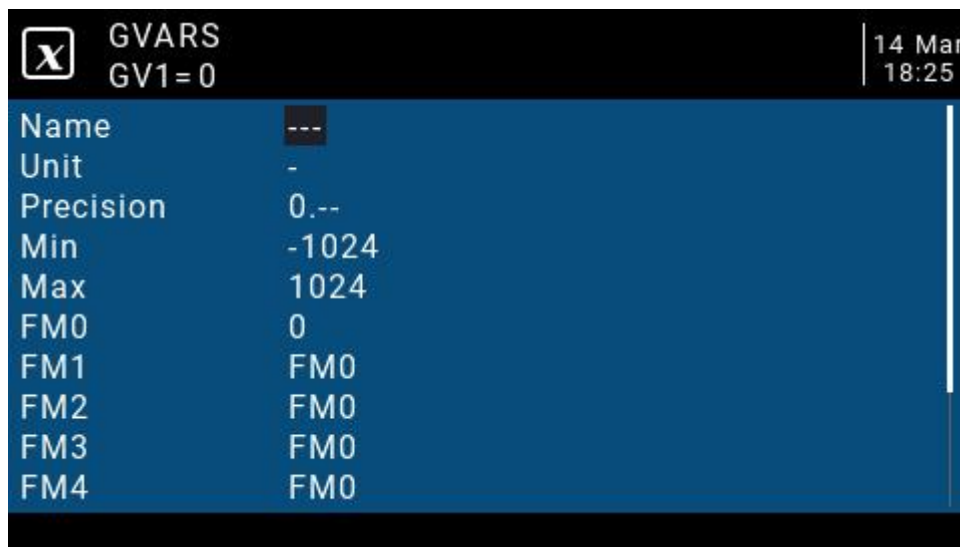
GLOBAL VARIABLES		Value on FM1							
GV1	0 FM0	FM0	FM0	FM0	FM0	FM0	FM0	FM0	FM0
GV2	0 FM0	FM0	FM0	FM0	FM0	FM0	FM0	FM0	FM0
GV3	0 FM0	FM0	FM0	FM0	FM0	FM0	FM0	FM0	FM0
GV4	0 FM0	FM0	FM0	FM0	FM0	FM0	FM0	FM0	FM0
GV5	0 FM0	FM0	FM0	FM0	FM0	FM0	FM0	FM0	FM0
GV6	0 FM0	FM0	FM0	FM0	FM0	FM0	FM0	FM0	FM0
GV7	0 FM0	FM0	FM0	FM0	FM0	FM0	FM0	FM0	FM0
GV8	0 FM0	FM0	FM0	FM0	FM0	FM0	FM0	FM0	FM0
GV9	0 FM0	FM0	FM0	FM0	FM0	FM0	FM0	FM0	FM0

Modify the value directly or press and hold the ENT key to pop up the sub-menu to change the type and parameter of the global variable.



GLOBAL VARIABLES									
GV1	0 FM0	FM0	FM0	FM0	FM0	FM0	FM0	FM0	FM0
GV2	0 FM0	FM0	FM0	FM0	FM0	FM0	FM0	FM0	FM0
GV3	0 FM0	FM0	FM0	FM0	FM0	FM0	FM0	FM0	FM0
GV4	0 FM0	FM0	FM0	FM0	FM0	FM0	FM0	FM0	FM0
GV5	0 FM0	FM0	FM0	FM0	FM0	FM0	FM0	FM0	FM0
GV6	0 FM0	FM0	FM0	FM0	FM0	FM0	FM0	FM0	FM0
GV7	0 FM0	FM0	FM0	FM0	FM0	FM0	FM0	FM0	FM0
GV8	0 FM0	FM0	FM0	FM0	FM0	FM0	FM0	FM0	FM0
GV9	0 FM0	FM0	FM0	FM0	FM0	FM0	FM0	FM0	FM0

Edit  
Clear



**Name:** Setting name

**Unit:** Units, switchable between normal and%

**Precision:** Precision, which can be used in decimal mode. You can set this mode corresponding to the percentage.

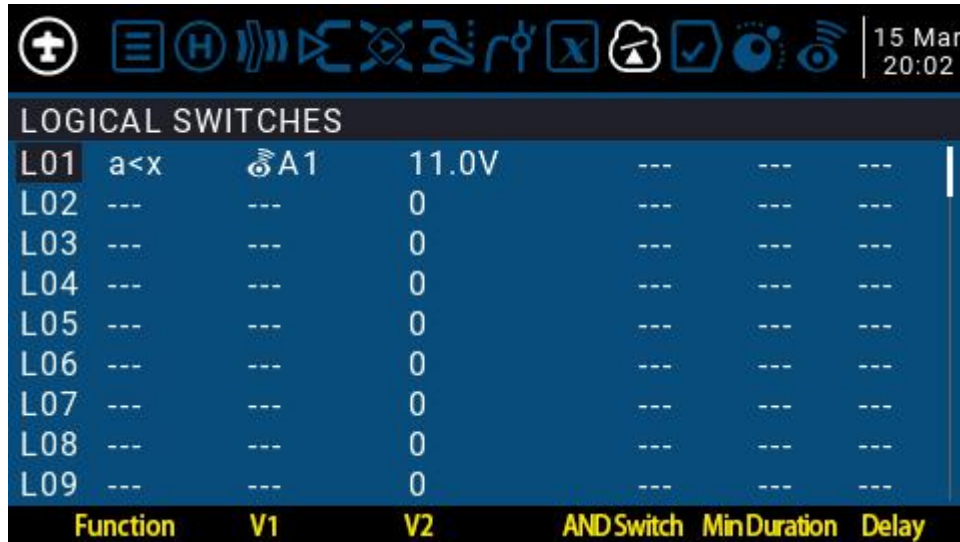
**Min:** Minimum value, which can be limited when the value is changed dynamically

**Max:** Maximum value, which can be limited when using dynamic change values

**FM0-FM8:** You can specify a value for each flight mode or set it to be the same as the other flight modes. Press and hold the ENT key to switch the input value and select the flight mode in this field. When editing a value, it will increment / decrement by 1 or 0.1, depending on the "Precision" setting above.

#### 4.4.8. Logic switches

The logic switch is a user-programmed virtual switch. Like the physical switch, the logic switch is also a switch, but unlike the visible switch, which can be moved by hand, the logic switch is an internal switch triggered by some conditions. The judgment condition you set allows the remote control to automatically turn on or off the logic switch to achieve a certain or a series of automated actions.



	Function	V1	V2	ANDSwitch	MinDuration	Delay
L01	a<x	A1	11.0V	---	---	---
L02	---	---	0	---	---	---
L03	---	---	0	---	---	---
L04	---	---	0	---	---	---
L05	---	---	0	---	---	---
L06	---	---	0	---	---	---
L07	---	---	0	---	---	---
L08	---	---	0	---	---	---
L09	---	---	0	---	---	---

The setting of the L01 example in the figure is expressed as follows: When the return value A1 is less than 11.0V, the L01 switch is automatically turned on. In the settings of other pages, L01 has the same function as the physical switch. You can define the corresponding function for L01 on or off. In this way, a switch is automatically executed according to the parameters that change in real time.

The remote-control system provides 64 logic switches, each of which has three judgment methods:

1. Compare the values of parameters a and b, a corresponds to V1, b corresponds to V2, a and b can be any source, such as input source, channel, switch, or return item, etc.
2. Compare the value of parameter a and data x, a corresponds to v1, x corresponds to v2, and x is a fixed value, which is used to compare with parameter a
3. Parameter a can be compared with its own calculation result. For example, the change of parameter a itself can affect the current state of the logic switch.

### Functions

a=x	Triggered when the parameter v1 is equal to the data v2. For example, if the thr gimbal is less than -90, the current logic switch is turned on when the thr gimbal is less than -90%.
a ~ x	Triggered when the parameter v1 is approximately equal to the data v2, approximately equal to the range of about 10%
a>x	Triggered when parameter v1 is greater than data v2
a<x	Triggered when parameter v1 is less than data v2

$ a  > x$	Triggered when the absolute value of parameter v1 is greater than v2, the absolute value is that it will become positive no matter whether it is positive or negative
$ a  < x$	Triggered when the absolute value of parameter v1 is less than v2
AND	AND operation is triggered when both parameters v1 and v2 meet the conditions. For example, v1 is the switch SA $\uparrow$ and v2 is SB $\uparrow$ , which indicates that the current logic switch can be turned on when both SA and SB switches are in the $\uparrow$ position.
OR	OR operation, which can be triggered when one of the parameters v1 and v2 meets the conditions, or when all the conditions are met
XOR	Exclusive OR operation, triggered when one of the parameters v1 and v2 meets the conditions, not triggered when all the conditions are met or all the conditions are not met
Edge	<p>Is a momentary switch (very short duration, about 30 ms), it will be triggered when V1 meets the conditions</p> <p>V1: Can be physical switch, logic switch, trim button</p> <p>V2: It is divided into two parts [t1: t2], t1 is the minimum value, and t2 is the maximum duration of V1. The logic switch is triggered only after t1 when V1 meets the conditions, and is closed before t2.</p> <p>If t2 is left as "---" then only t1 is applicable. When V1 changes from on to off (ie falling edge), the logic switch will be triggered, and then the logic switch will be turned on for 1 processing cycle (about 30 ms). If t2 is set to "&lt;&lt;", the logic switch (ie, rising edge) is triggered when V1 changes from off to on.</p>
$a = b$	Triggered when the parameter v1 is equal to the parameter v2. For example, when the value of the thr gimbal and the value of the ail gimbal are equal, the type of v2 at this time is not digital data, but a source
$a > b$	Triggered when parameter v1 is greater than parameter v2
$a < b$	Triggered when parameter v1 is less than parameter v2
$\Delta \geq x$	$\Delta$ is the mathematical symbol Delta (difference value). It is triggered when the difference of the parameter v1 itself is greater than or equal

	to the value of data v2. Switch, this item only judges the difference when v1 changes from small to large
$ Δ  ≥ x$	Triggered when the absolute value of the difference of the parameter v1 itself is greater than or equal to the value of v2. This judges the absolute value. Since the negative value also becomes positive, a change from v1 to v or from v1 to trigger the current logic switch
Timer	The switch that automatically loops all the time. V1 is the on time and v2 is the off time. It can be defined by v1 and v2 to automatically cycle at constant intervals.
Sticky	v1 can only switch on, v2 can only switch off

**AND Switch:** With the arithmetic switch, this item can set any physical switch and logic switch. The current logic switch can be triggered when the switch set by this item and the current item meet the conditions

**Duration:** Hold time, the length of the current logic switch after it is triggered. If there is no parameter, the default is always on. If this item is set for time (0.1-25 seconds), the current logic switch will automatically turn off after this time.

**Delay:** Delay, after the trigger is turned on, the range is 0.0 to 25 seconds.

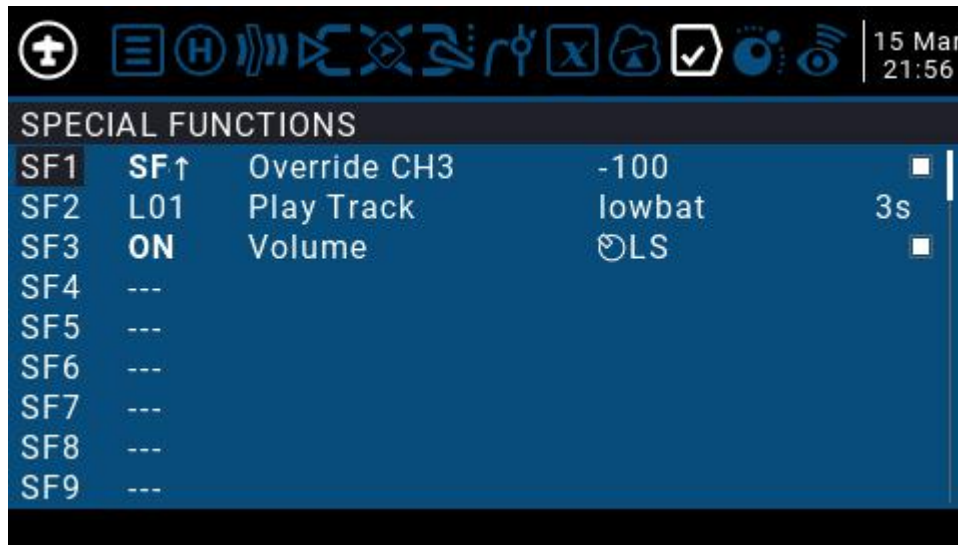
#### 4.4.9. Special Functions

The combination of logic switches, special functions, global variables, and pass back items opens up a variety of exciting new features for the RadioMaster TX16S. E.g.:

- Changes in battery voltage data returned by the receiver can trigger voice alerts
- Altitude data returned from the barometer on the aircraft, real-time broadcast of the aircraft's altitude
- By defining voice for the switch, real-time voice broadcast operation on the remote control
- Use logic switches and global variables to let the remote control perform a single or a series of automated actions
- Call lua scripts with switches or logic switches for more advanced custom functions
- Use the knob to adjust the volume

-Use the switch to adjust the backlight brightness

In addition to a few of the commonly used methods listed above, the ever-changing features allow you to realize your imagination



The three examples in the picture are represented as:

**SF1**: When the SF switch position is ↑, the CH3 channel will be covered by -100. Usually this setting is used to lock the throttle.

**SF2**: When the logic switch L01 is automatically turned on, lowbat (low battery voltage) voice will be broadcasted. The rightmost 3s means that the voice will be broadcasted every 3 seconds. Automatically turn on when

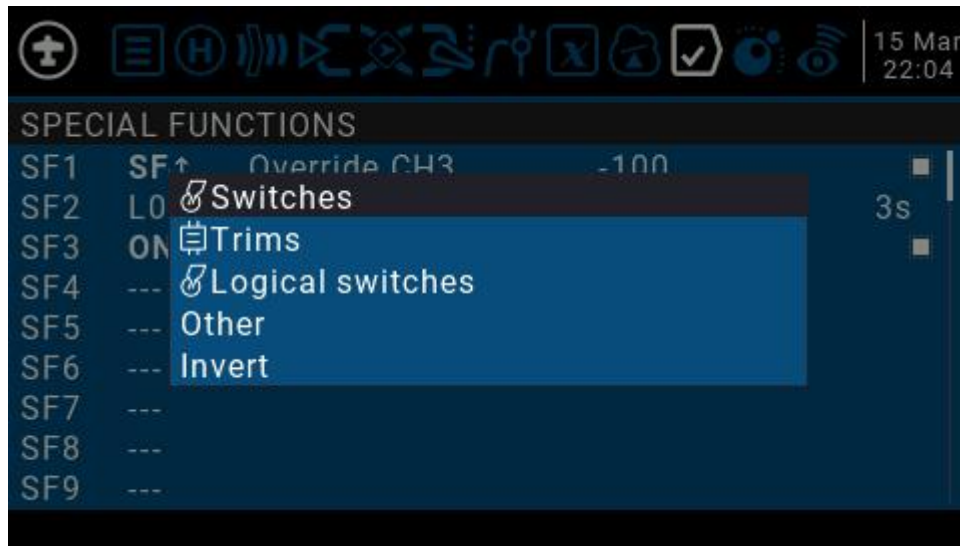
**SF3**: When the remote control is activated, the LS slider is defined as a function to control the system volume

Each model can have 64 special functions. In addition, there are 64 global settings that are common to all models. To use the global function, please enter the Global Functions page in the remote-control system settings to set it.

Each setting is activated with a trigger switch. You can select physical switches, logical switches, fine-tuning buttons, and flight mode. There are two other special options, ON and Ones (which are always enabled when the machine is turned on), and One (which is performed only once when the machine is turned on)

Press and hold the ENT key to enter the sub-menu for displaying sources by category. Scroll up or down to select the desired category and press the ENT key.





The following functions are triggered by the switch selected above

Override	Override channel value
Trainer	Coach mode enable switch, it is recommended to set to SH rebound switch, this switch is used to activate or stop the operation of the student machine
Inst.Trim	One-touch saves the current gimbal position as a fine-tuning value
Reset	Reset, you can choose to reset all or reset one way individually. The content of the reset option is the same as that in the main interface.
Set Time	Used to set the timer, set the timer time and turn on when the switch is turned on
Adjust	Adjust the global variable Gvar and enter a fixed number directly Press and hold the Ent pop-up menu to change the way to set Gvar. There are three options: Mixer Source: Set the value of Gvar with an input source Global var, another global variable Inc / Decrement: increase or decrease
Volume	Select a knob or slider to adjust the volume
SetFailsfe	Use the switch to set the receiver's runaway protection anytime, anywhere
Play Sound	Play a sound ! 1x: Play sound once, not at startup



	1x: Play sound once. 1s-60s: broadcast at intervals (seconds)
Play Track	Play wav file in SD card, single broadcast and loop broadcast are the same as above
Play Value	Voice broadcast value, can broadcast values from any source, such as real-time values such as gimbal, voltage, altitude, time, etc.
Lua Script:	Call the specified script, and the script file should be placed in the /SCRIPTS / FUNCTIONS / folder of the SD card.
BgMusic	Background music, loop play wav files, take effect immediately after power on
BgMusic II	Pause background music
Vario	Broadcast Vario value
Haptic	shock
SD Logs	Start recording logs, save on SD card, can set time interval 0.2-25.5 seconds
Backlight	To control the brightness of the backlight, you must first define the backlight ON and OFF brightness in the system settings. This uses the switch to switch the corresponding ON and OFF brightness of the backlight.

#### 4.4.10. Custom Scripts

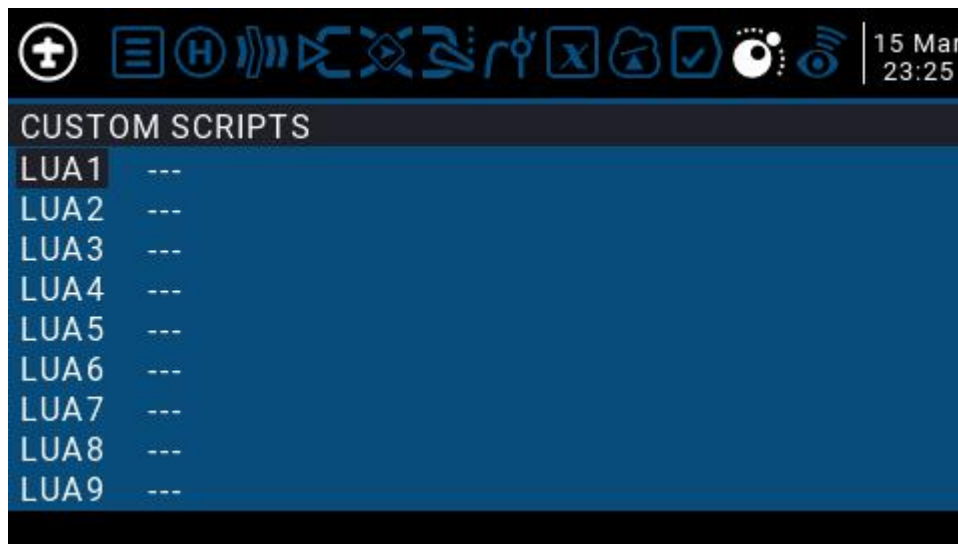
Custom script allows you to customize the functions of the remote control. The scripting language used is Lua, which is a lightweight embeddable scripting language. You need to implement custom functions in the remote control. There are three basic types:

One-time: The script runs only once and then terminates. Initialization of some parameters, and a wizard for creating a new model. The script is stored in the SCRIPTS folder of the SD card.

Mix: A script that executes in a loop, similar to the main program, and is always executed during remote operation.

Function: The script is called in Special Functions. This script is only allowed to execute when the switch in the special function is turned on, and closed when the switch is turned off.

There are some caveats-if the script stops executing, you should never use Lua model scripts to control any aspect of the model that might cause a crash. The reason is that if the script tries to use too much CPU time or memory, it will be closed and it will not run again when the model is selected.



“The Custom Scripts page is for mixed-type scripts that run continuously. These scripts should be placed in the / SCRIPTS / MIXE / folder of the SD card.

There can be up to 9 custom scripts.

For script development and documentation, please refer to the OpenTX 2.3 Lua Reference Guide:

<https://legacy.gitbook.com/book/opentx/opentx-2-3-lua-reference-guide/details>

#### 4.4.11. Digital Transmission and Telemetry

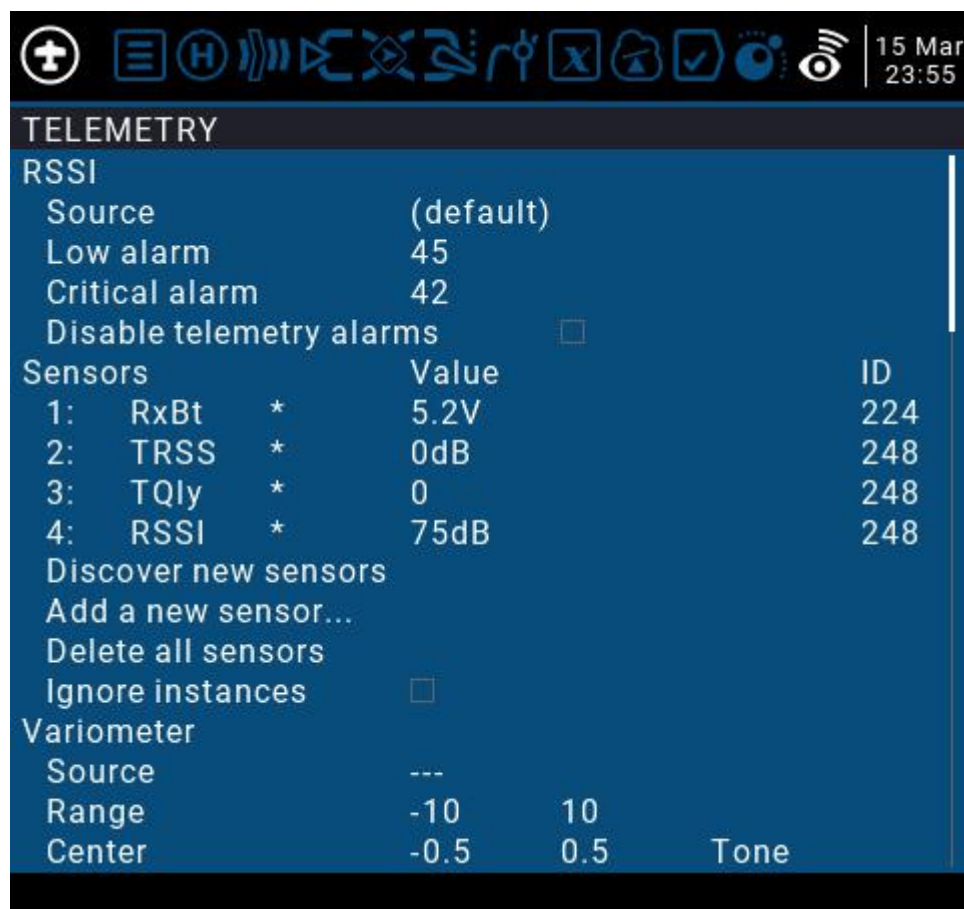
Each value received via digital transmission is considered a separate sensor with its own properties. Multiple identical sensor types can be connected, but the physical ID must be changed. For example, a sensor for each battery in a 2-6S lithium battery, or monitoring individual motor currents in a multi-motor model. Each sensor can be reset individually with special functions.

Receiver Signal Strength Indicator (RSSI): The value transmitted by the receiver in the model to the remote control, indicating the strength of the received signal. The warning can be set to warn when it is below the minimum, indicating that you are in danger beyond the flight range. Factors affecting signal quality include external interference, long distances, poor steering or antenna damage, etc.

It is not an absolute measurement, but a number that represents the ratio of the signal to some initial "good" value. The number is relative, but can indicate that the model may be close to the range limit of the controlling aircraft.

When the return signal is completely lost, the remote control will prompt "Lost return signal". Please note that due to a failure of the return link, the remote control can no longer warn you of RSSI or any other alarm conditions, so no further alarm sounds.

Digital settings:



## 5. External UART And SI , SJ interface

The TX16s has two externally accessible 5v UART ports that are direct output non-inverted TTL. Aux 1 is a 4 pin TTL UART, Aux 2 is a 5 pin TTL UART with a CTR connection directly to the Radios MCU.

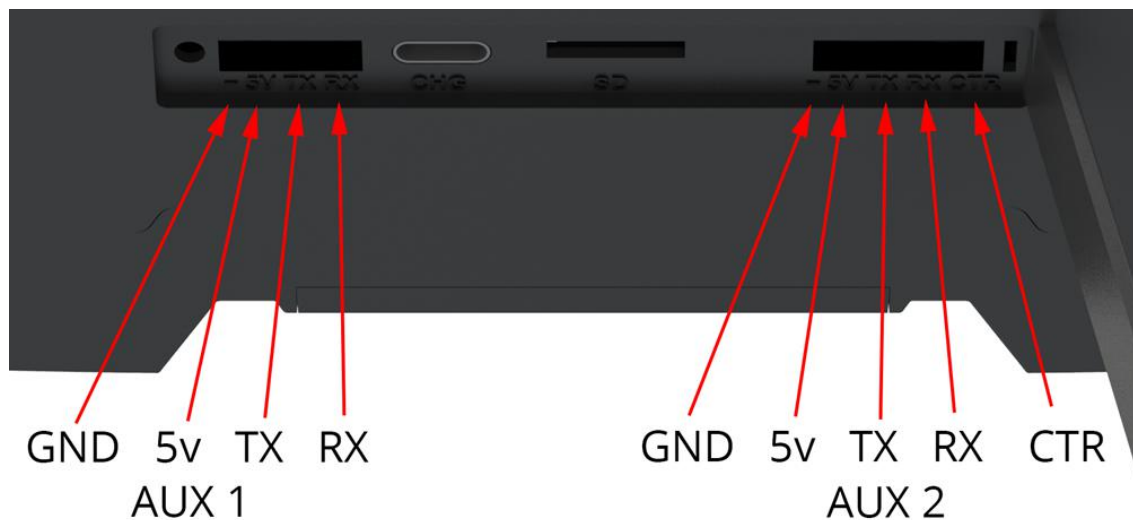


### IMPORTANT NOTE!

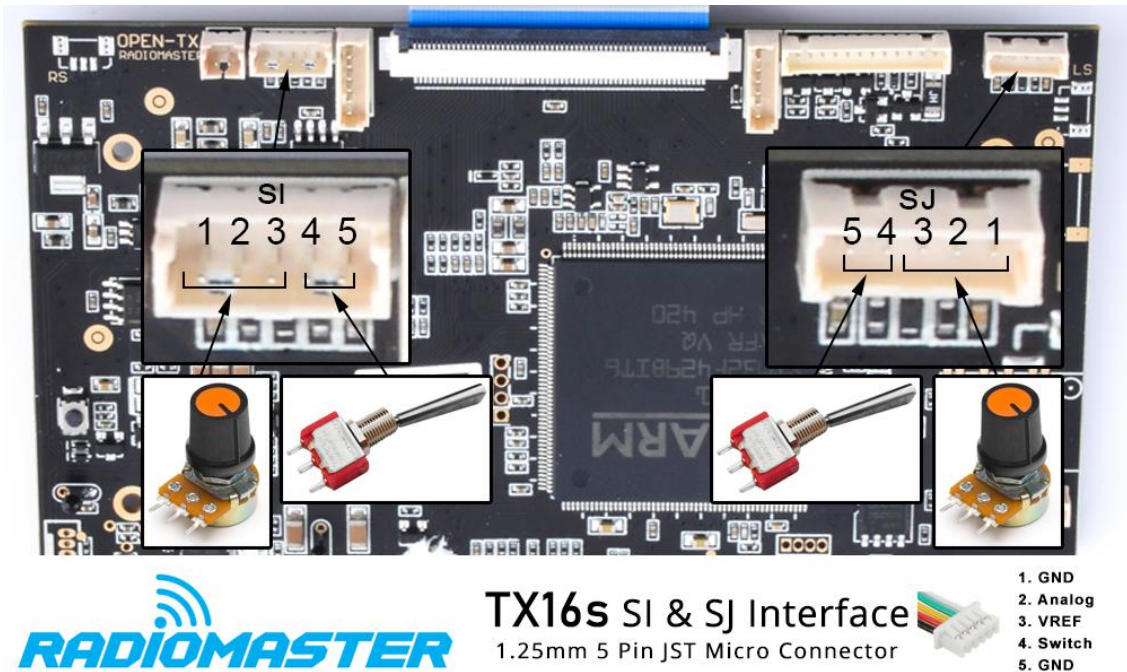
Ensure the correct polarity and voltage are applied when connecting to UART interface. **Do not apply more than 5v to the UART port at any time.**

External UARTS can be used for additional hardware and projects such as:

- Adding a Bluetooth module.
- Updating compatible receivers
- External Telemetry Data
- Antenna Tracking
- And more!



SI and SJ are assignable slots in OpenTX for an extra two 2pos switches and an extra 2 analog pots.





---

### **EU Simple Declaration of Conformity**

RadioMaster declares the radio equipment TX16s is in compliance with EU directives Directive 2014/53/EU. Full text of the declaration of conformity is available at the following website [www.radiomasterrc.com](http://www.radiomasterrc.com)

#### **Manufacturer by**

ShenZhen RadioMaster Co., Ltd

5th Floor, Yutian Building, No. 18 Yangtian Road, Xin'an Street, Baoan District, Shenzhen, Guangdong.



---

### **FCC ID: 2AV3G-TX16S**

#### **FCC Information**

This equipment has been tested and found to comply with the limits for Part 15 of the FCC rules. This device complies with part 15 of the FCC rules. Operation is subject to the following two conditions: (1) This device may not cause harmful interference, and (2) this device must accept any interference received, including interference that may cause undesired operation. Full text of the declaration of conformity is available at the following website [www.radiomasterrc.com](http://www.radiomasterrc.com)



#### **CAUTION:**

Changes or modifications not expressly approved by the party responsible for compliance could void the user's authority to operate the equipment. This product contains a radio transmitter with wireless technology which has been tested and found to be compliant with the applicable regulations governing a radio transmitter in the 2.400GHz to 2.4835GHz frequency range.

#### **Antenna Separation Distance**

When operating your RadioMaster transmitter, please be sure to maintain a separation distance of at least 20 cm between your body (excluding fingers, hands, wrists, ankles and feet) and the antenna to meet RF exposure safety requirements as determined by FCC regulations.